

LANDSCAPE PLAN

MULWALA SOLAR FARM - STAGE 1B

Prepared FOR

EE AUSTRALIA EPC 1 PTY LTD

April 29, 2025



LANDSCAPE DESIGN RESPONSE

INTRODUCTION

A visual assessment was prepared to analyse the visual impact to nearby residential dwellings from the proposed construction of the Mulwala Solar Farm.

It identified the need for a 1,390m long screen planting bordering Savernake Road on the eastern edge of Stage 1. The low-profile form of the majority of the Project, primarily the solar array, which is approximately 4m in height at full tilt, will ensure that planting will be able to provide screening within a relatively short period of time.

This Landscape Plan has been prepared to fulfill the necessary screening as outlined by the LVIA and in accordance with Conditions 7 and 8 of Schedule 3 of the Development Consent for SSD-9039.

METHODOLOGY

Screen Planting

The Landscape and Visual Impact Assessment report (LVIA) has identified viewpoints around the perimeter of the site subject to highest visual impacts. The most effective way to ameliorate views is to establish screen planting around the perimeter of the site where the current views could be negatively impacted by the proposal.

Urbis have devised one distinct planting typology responding to key view points to provide both landscape and visual amenity. The overall planting strategy is shown in the adjacent figure.

Legend

Mulwala Solar Farm - Stage 1b

Landscape Buffer Planting

High Density Tree & Shrub Planting

Solar Panel Row Extents

Existing Groups of Vegetation

To be retained

Existing Trees to be Retained

Trees to be Removed

Refer to the Biodiversity Development Assessment Report: Mulwala Solar Farm by MJD Environmental Pty Limited

Refer to Urbis Mulwala Solar Farm - Stage 1b Detail Site Plan (001-CS, 201-FI, 202-FI, 203-FI) for detail plans and specific location of retained and removed vegetation groups and trees.

OVERALL PLANTING STRATEGY

2 SOLAR FARM, MULWALA LANDSCAPE STRATEGY

PLANTING TYPOLOGIES

VEGETATION RETENTION STRATEGY

- Existing vegetation will be retained where possible.

PROPOSED SCREENING TYPOLOGY

High Density Tree & Shrub Planting

Comprised of:

- Large Trees (4-10m high) – Centrally located within 5m buffer at 20m centres
- Small Trees (3-6m high)– Centrally located within 5m buffer in random small groups between the canopy trees. Can be located as close as 5m apart.
- Large Shrubs (2-7m high)– Roughly located in a meandering line centrally along the 5m buffer at 2m centres.
- Medium Shrubs (0.5 - 4m high)- Roughly located in a meandering line either side of the line of trees and large shrubs at 1.2m centres.

PROPOSED PLANT SPECIES

The plant species have been drawn from a number of NSW Planting Community Types and suitable plant lists for the area:

- Western Grey Box – White Cypress Pine tall woodland on loan soil on alluvial plains of NSW South Western Slopes Bioregion and Riverina
- Western Grey Box – Tall grassy woodland on alluvial loam and clay soils in the NSW South Western Slopes and Riverina Bioregions
- Yellow Box – White Cypress Pine grassy woodland on deep sandy-loam alluvial soils of the eastern Riverina region and Western NSW South Western Slopes Bioregion

PLANTING PALETTE

The planting palette has been carefully selected to accommodate existing ecologies around the site. There is a diverse selection that focuses on native species endemic to the area and provides habitat for the critically endangered fauna. The screen planting will differ accordingly to location around the site, while still respecting the site's unique existing character and form.

LARGE TREES			
COMMON NAME	SCIENTIFIC NAME	MATURE SIZE (H X W)	POT SIZE
Hickory Wattle	<i>Acacia implexa</i>	5-10m x 4-10m	5L
Weeping Myall	<i>Acacia pendula</i>	6-10m x 6-8m	5L
Broughton Willow	<i>Acacia salicina</i>	4-10 x 3-5m	5L
Bull Oak	<i>Allocasuarina luehmannii</i>	7-8m x 3-4m	5L
Gungurru	<i>Eucalyptus caesia</i>	4-10m x 3-8m	5L
SMALL TREES			
COMMON NAME	SCIENTIFIC NAME	MATURE SIZE (H X W)	POT SIZE
Australian Blackwood	<i>Acacia melanoxylon</i>	4m x 4m	5L
Oyster Bay Pine	<i>Callitris rhomboidea</i>	3-6m x 2-3m	5L
Quandong	<i>Santalum acuminatum</i>	4-5m x 2-4m	5L
LARGE SHRUBS			
COMMON NAME	SCIENTIFIC NAME	MATURE SIZE (H X W)	POT SIZE
Umbrella Wattle	<i>Acacia oswaldii</i>	3-5m x 3-5m	Tubestock
Nealie	<i>Acacia rigens</i>	2-7m x 2-4m	Tubestock
Crimson Bottlebrush	<i>Callistemon citrinus</i>	2-5m x 2-5m	Tubestock
Weeping Emu Bush	<i>Eremophila longifolia</i>	2-6m x 2-4m	Tubestock
MEDIUM SHRUBS			
COMMON NAME	SCIENTIFIC NAME	MATURE SIZE (H X W)	POT SIZE
Gold-dust Wattle	<i>Acacia acinacea</i>	0.5-2.5m x 2-4m	Tubestock
Hakea Wattle	<i>Acacia hakeoides</i>	2.5-4m x 3-4m	Tubestock
Old Man Saltbush	<i>Atriplex nummularia</i>	1-3m x 2-4m	Tubestock
Wedge-leaf Hop Bush	<i>Dodonaea viscosa subsp. cuneata</i>	2-3m x 1-2m	Tubestock
Spiney Headed Mat Rush	<i>Lomandra longifolia</i>	0.5-1m x 0.8-1m	Tubestock
Golden Tip	<i>Goodia medicaginea</i>	2-3m x 2-3m	Tubestock
GROUNDCOVERS			
COMMON NAME	SCIENTIFIC NAME	MATURE SIZE (H X W)	POT SIZE
Honey Pots	<i>Acrotriche serrulata</i>	0.1-0.3m x 0.5-1m	Tubestock
Native Primrose	<i>Goodenia blackiana</i>	0.1-0.2m x 0.3-1m	Tubestock
Creeping Boobialla	<i>Myoporum parvifolium</i>	0.1-0.2m x 2-3m	Tubestock
Native Violet	<i>Viola hederacea</i>	0.2m x 1m	Tubestock

PLANTING PALETTE

LARGE & SMALL TREES



LARGE SHRUBS

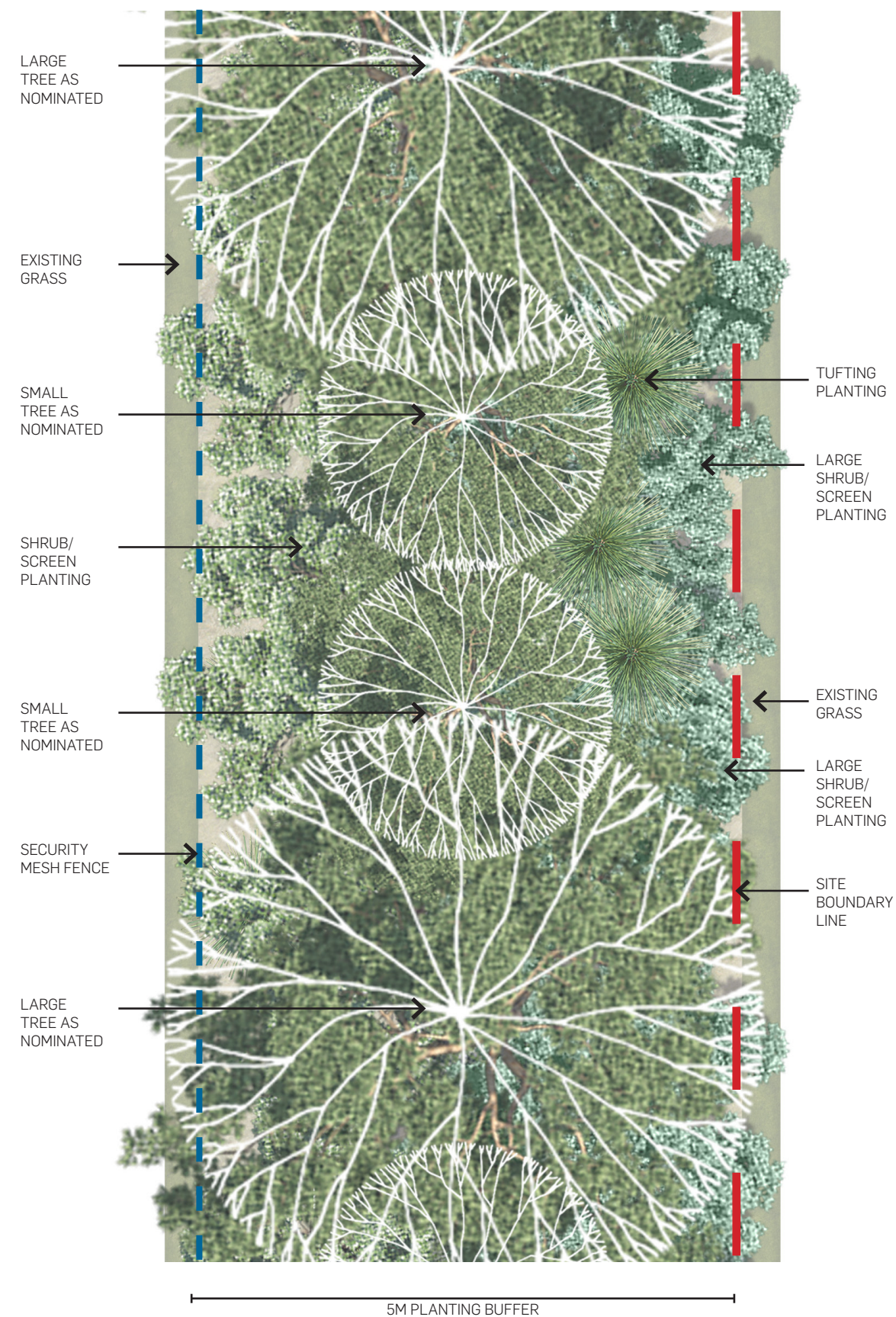


MEDIUM SHRUBS

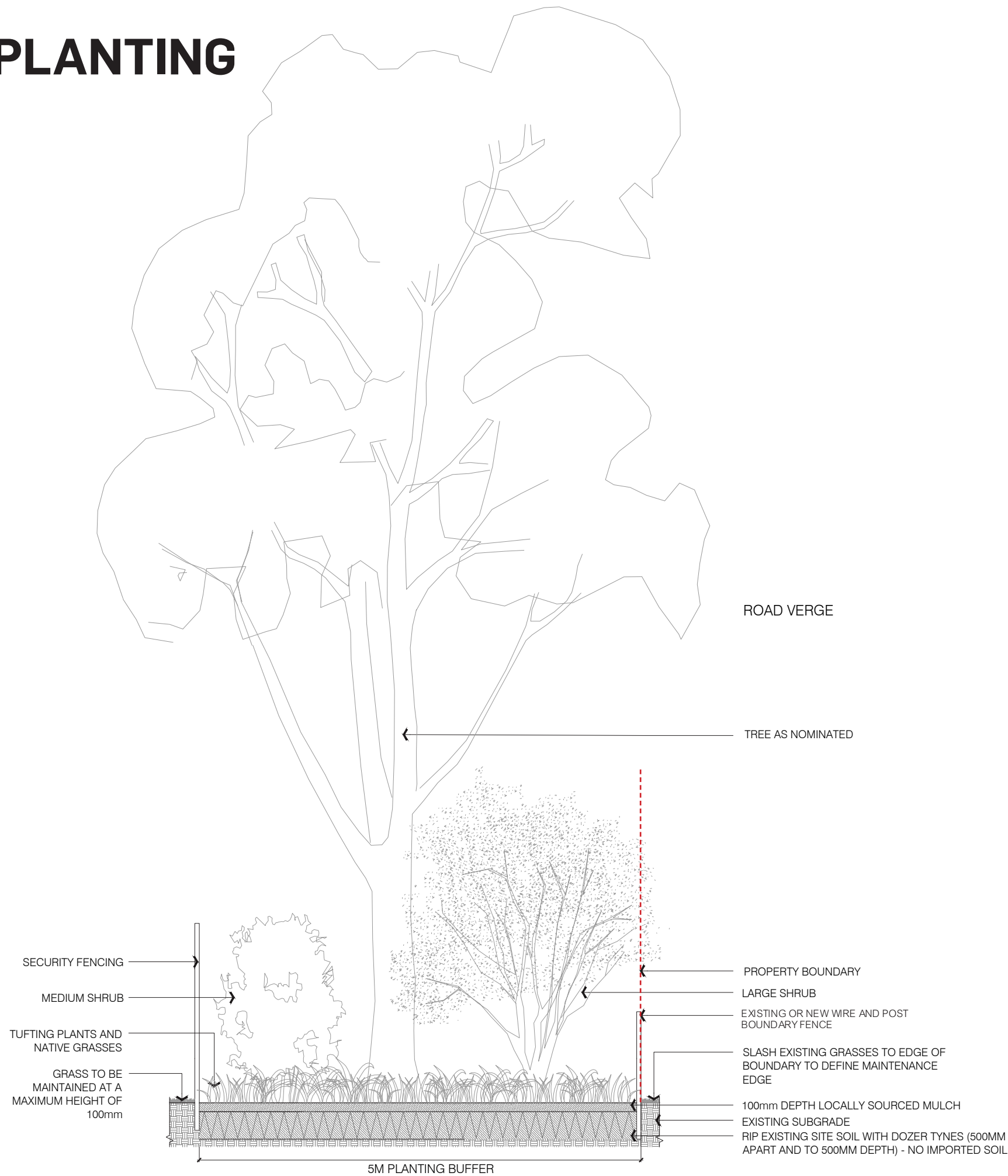


TYPICAL LANDSCAPE BUFFER PLANTING

HIGH DENSITY TREE & SHRUB PLANTING



Typical 5m Wide Planting Buffer Plan 1:50 @A3



Typical 5m Wide Planting Buffer Section 1:50 @A3

PLANT ESTABLISHMENT MAINTENANCE

Maintenance Notes:

General

- Maintain a minimum 5 metre height of screening shrubs.
- Maintain 100mm maximum height of grassland within property boundary.
- Product warranty: submit the supplier's written statement certifying that plants are true to the required species and type, and are free from diseases, pests and weeds.
- Insurance: the contractor is to ensure suitable insurance cover and / or bank guarantee is in place for the theft and / or damage of all works executed under this contract for the plant maintenance period.
- Planting maintenance period: the planting maintenance period will be 52 weeks and will commence from the date of practical completion of each phase of planting works (hereby specified to be a separable part of the works). It is anticipated that planting works will be undertaken in one phase.
- Planting maintenance program: 2 weeks prior to practical completion, furnish a proposed planting establishment program, and amend it as required. Such the program should contain details of the types and frequency of maintenance activities involved with the establishment of plants and grassed areas. Comply with the approved program.
- Planting maintenance log book: keep a log book recording when and what maintenance work has been done and what materials, including approved toxic materials, have been used. Log book must be signed off by the client's representative after each maintenance visit. Maintain log book in location nominated by superintendent. All entries are to be initialled by person nominated by superintendent. Log book to contain a copy of the approved planting establishment program.

Solar Panels

Urbis understand the following:

- Solar panels will be surrounded by existing pasture grass for easy maintenance
- Grass to be maintained to maximum 100mm height under the solar panels through grazing or slashing.
- Gravel maintenance paths provided for vehicular maintenance circulation.

Watering Strategy

- Low water demand planting is proposed.
- Passive irrigation is proposed on site.
- Water truck watering to be utilised during establishment/maintenance period.

Watering

If the watering regime is intended to be amended the contractor must seek written approval from the superintendent immediately prior to the deferment of watering.

Watering permits: the contractor is responsible for obtaining the necessary watering permits required to carry out the watering as specified.

Planting Maintenance

Protection of works: provide any fencing or barriers necessary to protect the planting from damage throughout the planting establishment period.

Recurrent works: throughout the planting maintenance period, continue to carry out recurrent works of a maintenance nature all to the extent required to ensure that the plants are in the best possible condition at the end of the planting maintenance period. These activities are including but not limited to:

- weeding,
- rubbish removal,
- fertilizing,
- pest and disease control,
- adjusting / replacing stakes and ties,
- topping up locally sourced mulch,
- cultivating,
- pruning,
- keeping the site neat and tidy.

Replacements: the contractor is responsible for the replacement of failed, damaged or stolen trees, shrubs and groundcovers throughout the planting establishment period.

Weeding

Generally: regularly remove, by hand, rubbish and weed growth that may occur or recur throughout turfed, planted and mulched areas. Continue eradication throughout the course of the works and during the planting establishment periods.

Weed eradication: the contractor must make allowance for a higher level of maintenance during establishment to ensure that weeds are controlled.

Herbicide use: re-application of herbicide such as Ronstar or equivalent if required.

Compliance

Requirement: plant maintenance shall be deemed complete subject to the following compliance with the criteria:

- repairs to planting media completed,
- ground surfaces are covered with the specified treatment to the specified depths,
- pests, disease, or nutrient deficiencies or toxicities are not evident,
- organic and rock mulched surfaces have been maintained in a weed free and tidy condition and to the specified depth,
- vegetation is established and well formed,
- plants have healthy root systems that have penetrated into the surrounding, undisturbed ground and not able to be lifted out of its planting hole
- vegetation is not restricting essential sight lines and signage,
- collection and removal of litter,
- all non-conformance reports and defects notifications have been closed out,
- plant maintenance compliance schedule.

Pruning

Generally: tree plantings shall be left to grow in a form consistent with the growth habit of the species.

Pruning: cut back tree canopies and groundcovers to road verges, and light poles and signs as required achieving clear sight lines when viewed along roadway.

Requirement: pruning to be undertaken by a qualified tree surgeon / arborist

Completion

Cleaning: remove temporary protective fences and tree stakes at the end of the planting maintenance period.

Safety and Security

An integrated approach to safety will improve actual and perceived personal security in pedestrian public domain areas. Signage will be provided across the precinct to assist with wayfinding and navigation through the site.



MULWALA SOLAR FARM

255 SAVERNAKE ROAD, MULWALA, NEW SOUTH WALES, 2647 | LANDSCAPE DOCUMENTATION

GENERAL NOTES

Tree Protection:
All trees to be retained are to be suitably protected. Maintain existing ground levels at the interface between the ground and the tree trunk. Install a maximum depth of 100mm approved organic mulch, e.g. woodchips, to the radius of the Root Protection Zones (RPZs) beneath the canopy (for grassed areas and garden beds- tapering soil depth towards tree trunk). Area beneath the canopy of the protected trees should be fenced prior to the commencement of the construction activities. No excavation, filling, machinery or storage of materials shall occur within the fenced off area. Roots requiring severance beyond the tree canopy shall be clean cut with hand saw and kept moist. All roots over 40mm dia. Any roots within the fenced area should not be cut without the approval from an experienced and approved arborist.

Soil Preparation:
All planting areas to be prepared as per Specification with deep ripping.

Topsail:
Only existing site soil is to be used.

Planting:
All plants are to be true to species, healthy, free from pests disease and stress.

WARNING:
Beware of underground services.
The locations of underground services are approximate only and their exact position should be proven on site. No guarantee is given that all existing services are shown.

All dimensions are to be verified on site prior to construction commencing. Any discrepancies are to be immediately reported to the Project Manager for further instruction

DRAWING SHEET LIST

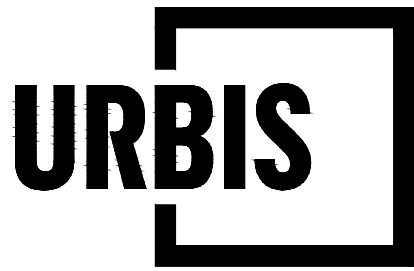
Sheet List Table

Sheet Number	Sheet Title
CS 001	COVER SHEET
CS 002	LEGEND AND PLANTING SCHEDULE
PL 501	PLANTING PLAN 01
PL 502	PLANTING PLAN 02
PL 503	PLANTING PLAN 03
DT 901	DETAILS



ALL DRAWINGS ARE DESIGNED TO
BE PRINTED AND READ IN COLOUR

IT IS THE CONTRACTORS' RESPONSIBILITY TO
PRINT DRAWINGS IN COLOUR TO AVOID ANY
POTENTIAL DISCREPANCIES IF DRAWINGS
ARE PRINTED IN BLACK AND WHITE



Angel Place, Level 8, 123 Pitt Street | Sydney
NSW 2000 Australia | +61 2 8233 9900
URBIS Ltd | ABN 50 105 256 228

CLIENT
**EUROPEAN ENERGY
AUSTRALIA PTY LTD**

KEY PLAN

DISCLAIMER

Copyright by Urbis Ltd. This drawing or parts thereof may not be reproduced for any purpose or used for another project without the consent of Urbis other than reproduction for the purposes of actual ordering, supply, installation or construction. This drawing must be read in conjunction with all relevant contracts, schedules, specifications, drawings and any other issued written instructions. Do not scale from drawings. Written figured dimensions take preference to scaled dimension and must be verified on site before proceeding with any work. All discrepancies must be referred to the superintendent for a written decision prior to ordering, supply or installation. Urbis must be notified in writing of any discrepancies.

B	FOR APPROVAL	HS	NM	29.04.2025
A	FOR APPROVAL	HS	NM	14.03.2025
REV	DESCRIPTION	DWN	CHK	DATE

PROJECT NAME & ADDRESS

**MULWALA SOLAR FARM
STAGE 1b**

PROJECT DIRECTOR: MARK KUHNE

DRAWING TITLE
COVERSHEET

ISSUE
FOR APPROVAL

PROJECT NO.
P0055075

SCALE
1:10,000 @ A1 1:20,000 @ A3
100 200 300 400 500m

DRAWING NO.

CS-001

REVISION

B

PLOT STYLE URBIS_A1.CTB

PAGE SETUP: ---

PLOTTED BY: HAYLE SUMM

PATH: C:\Users\hsumm\Urbis Ltd\2025\275 European Energy - Mulwala Solar Farm - Advice - General\03 - Workspaces\03 - Landscapes\08 - Landscapes\08_Design_Live\03_2_CAD\Layouts\CS-002_LEGEND_GENERAL_PLANTING_SCHEDULE.dwg

GENERAL LEGEND

REFER TO PLANTING SCHEDULE FOR DETAILS

STAGE 1 SITE BOUNDARY

SECURITY FENCE
BY OTHERS

EXISTING TREES TO BE RETAINED

EXISTING TREES TO BE REMOVED

PROPOSED TREES

AREAS SUBJECT TO INUNDATION
TO BE AVOIDED WITH 10M OFFSET

AREA OF ECOLOGICAL VALUE
TO BE AVOIDED WITH 10M OFFSET

INVERTERS
REFER TO ENGINEERING DRAWINGS

2-STRING TRACKER TABLES (22)
- 56 PANELS PER TABLE

3-STRING TRACKER TABLES (35)
- 84 PANELS PER TABLE

4-STRING TRACKER TABLES (420)
- 112 PANELS PER TABLE

PROPOSED SHRUB & GROUNDCOVER

REFER TO PLANTING SCHEDULE AND DT- 901 FOR DETAILS

MIX 1

MIX 2
W2(M) X L15(M)

MIX 3
W2(M) X L15(M)

MIX 3
W2(M) X L24(M)

MIX 4

HIGH DENSITY PLANTING SCHEDULE

Trees

PLANT CODE	BOTANIC NAME	COMMON NAME	POT SIZE	SPACING	Qty.
ACA imp	Acacia implexa	Hickory Wattle	5L	AS SHOWN	15
ACA mel	Acacia melanoxylon	Australian Blackwood	5L	AS SHOWN	72
ACA pen	Acacia pendula	Weeping Myall	5L	AS SHOWN	15
ACA sal	Acacia salicina	Broughton Willow	5L	AS SHOWN	16
ALL lue	Allocasuarina luehmannii	Bull Oak	5L	AS SHOWN	12
CAR rho	Callitris rhomboidea	Oyster Bay Pine	5L	AS SHOWN	72
EUC cae	Eucalyptus caesia	Gungurru	5L	AS SHOWN	12
SAN acu	Santalum acuminatum	Quandong	5L	AS SHOWN	54

Mix_01

PLANT CODE	BOTANIC NAME	COMMON NAME	POT SIZE	Density (per m2)	Percent	Qty.
Aca hak	Acacia hakeoides	Hakea Wattle	Tubestock	1	25	695
Aca osw	Acacia oswaldii	Umbrella Wattle	Tubestock	0.5	25	347
Aca rig	Acacia rigens	Nealie	Tubestock	1	25	695
Ere lon	Eremophila longifolia	Weeping Emu Bush	Tubestock	1	25	695

Mix_02

PLANT CODE	BOTANIC NAME	COMMON NAME	POT SIZE	Density (per m2)	Percent	Qty.
Aca aci	Acacia acinacea	Gold-dust Wattle	Tubestock	3	33	1380
Dod vis	Dodonaea viscosa subsp. cuneata	Wedge-leaf Hop Bush	Tubestock	1	33	460
Myo par	Myoporum parvifolium	Wedge-leaf Hop Bush	Tubestock	3	34	1426

Mix_03

PLANT CODE	BOTANIC NAME	COMMON NAME	POT SIZE	Density (per m2)	Percent	Qty.
Cal cit	Callistemon citrinus	Crimson Bottlebrush	Tubestock	1	33	466
Goo med	Goodia medicaginea	Golden Tip	Tubestock	1	33	466
Vio hed	Viola hederacea	Native Violet	Tubestock	3	34	1445

Mix_04

PLANT CODE	BOTANIC NAME	COMMON NAME	POT SIZE	Density (per m2)	Percent	Qty.
Acr ser	Acrotriche serrulata	Old Man Saltbush	Tubestock	3	25	1042
Atr num	Atriplex nummularia	Spiney Headed Mat Rush	Tubestock	3	25	1042
Goo bla	Goodenia blackiana	Honey Pots	Tubestock	3	25	1042
Lom lon	Lomandra longifolia	Native Primrose	Tubestock	3	25	1042

ALL DRAWINGS ARE DESIGNED TO
BE PRINTED AND READ IN COLOUR

IT IS THE CONTRACTORS' RESPONSIBILITY TO
PRINT DRAWINGS IN COLOUR TO AVOID ANY
POTENTIAL DISCREPANCIES IF DRAWINGS
ARE PRINTED IN BLACK AND WHITE

URBIS

Angel Place, Level 8, 123 Pitt Street | Sydney
NSW 2000 Australia | +61 2 8233 9900
URBIS Ltd | ABN 50 105 256 228

CLIENT

EUROPEAN ENERGY
AUSTRALIA PTY LTD

KEY PLAN

DISCLAIMER

Copyright by Urbis Ltd. This drawing or parts thereof may not be reproduced for any purpose or used for another project without the consent of Urbis other than reproduction for the purposes of actual ordering, supply, installation or construction. This drawing must be read in conjunction with all relevant contracts, schedules, specifications, drawings and any other issued written instructions. Do not scale from drawings. Written figured dimensions take preference to scaled dimension and must be verified on site before proceeding with any work. All discrepancies must be referred to the superintendent for a written decision prior to ordering, supply or installation. Urbis must be notified in writing of any discrepancies.

B	FOR APPROVAL	HS	NM	29.04.2025
A	FOR APPROVAL	HS	NM	14.03.2025
REV	DESCRIPTION	DWN	CHK	DATE

PROJECT NAME & ADDRESS

MULWALA SOLAR FARM

STAGE 1b

PROJECT DIRECTOR: MARK KUHNE

DRAWING TITLE

LEGEND AND PLANTING SCHEDULE

ISSUE

FOR APPROVAL

SCALE

SET DRAWING SCALE

DRAWING NO.

CS-002

PROJECT NO.

P0055075

REVISION

B

Angel Place, Level 8, 123 Pitt Street | Sydney
NSW 2000 Australia | +61 2 8233 9900
URBIS Ltd | ABN 50 105 256 228

CLIENT
EUROPEAN ENERGY
AUSTRALIA PTY LTD

Copyright by Urbis Ltd. This drawing or parts thereof may not be reproduced for any purpose or used for another project without the consent of Urbis other than reproduction for the purposes of actual ordering, supply, installation or construction. This drawing must be read in conjunction with all relevant contracts, schedules, specifications, drawings and any other issued written instructions. Do not scale from drawings. Written figured dimensions take preference to scaled dimension and must be verified on site before proceeding with any work. All discrepancies must be referred to the superintendent for a written decision prior to ordering, supply or installation. Urbis must be notified in writing of any discrepancies.

REV					
B	FOR APPROVAL	HS	NM	29.04.20	
A	FOR APPROVAL	HS	NM	14.03.20	
REV	DESCRIPTION	DWN	CHK	DATE	

PROJECT NAME & ADDRESS

MULWALA SOLAR FARM

STAGE 1b

PROJECT DIRECTOR: MARK KUHNE

DRAWING TITLE
PLANTING PLAN 01

ISSUE
FOR APPROVAL

PROJECT NO.
P0055075

SCALE

1:1000 @ A1 1:2000 @ A3

10	20	30	40	50m
----	----	----	----	-----



DRAWING NO.

REVISION

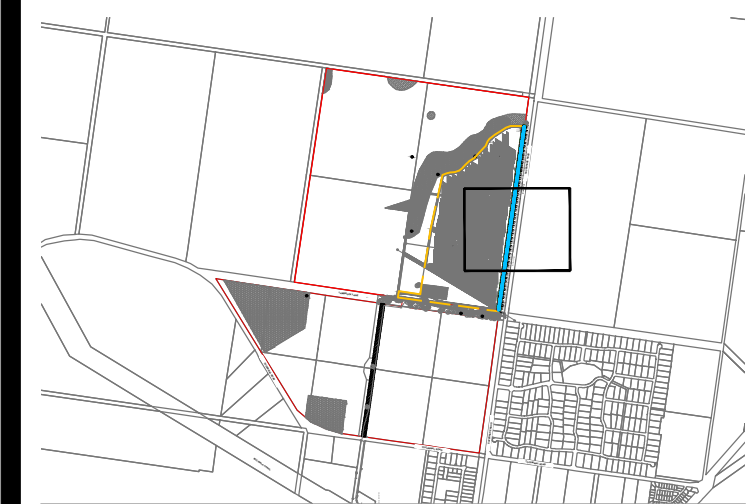
PL-501

B

ALL DRAWINGS ARE DESIGNED TO
BE PRINTED AND READ IN COLOUR

IT IS THE CONTRACTORS' RESPONSIBILITY TO
PRINT DRAWINGS IN COLOUR TO AVOID ANY
POTENTIAL DISCREPANCIES IF DRAWINGS
ARE PRINTED IN BLACK AND WHITE

KEY PLAN



DISCLAIMER

Copyright by Urbis Ltd. This drawing or parts thereof may not be reproduced for any purpose or used for another project without the consent of Urbis other than reproduction for the purposes of actual ordering, supply, installation or construction. This drawing must be read in conjunction with all relevant contracts, schedules, specifications, drawings and any other issued written instructions. Do not scale from drawings. Written figure dimensions take preference to scaled dimension and must be verified on site before proceeding with any work. All discrepancies must be referred to the superintendent for a written decision prior to ordering, supply or installation. Urbis must be notified in writing of any discrepancies.

[illegible]

PROJECT NAME & ADDRESS

MULWALA SOLAR FARM

STAGE 1b

PROJECT DIRECTOR: MARK KUHNE


DRAWING TITLE
PLANTING PLAN 02

ISSUE	PROJECT NO.
FOR APPROVAL	P0055075

SCALE

1:1000 @ A1 1:2000 @ A3

10 20 30 40 50m



DRAWING NO.	REVISION
-------------	----------

PL-502 B

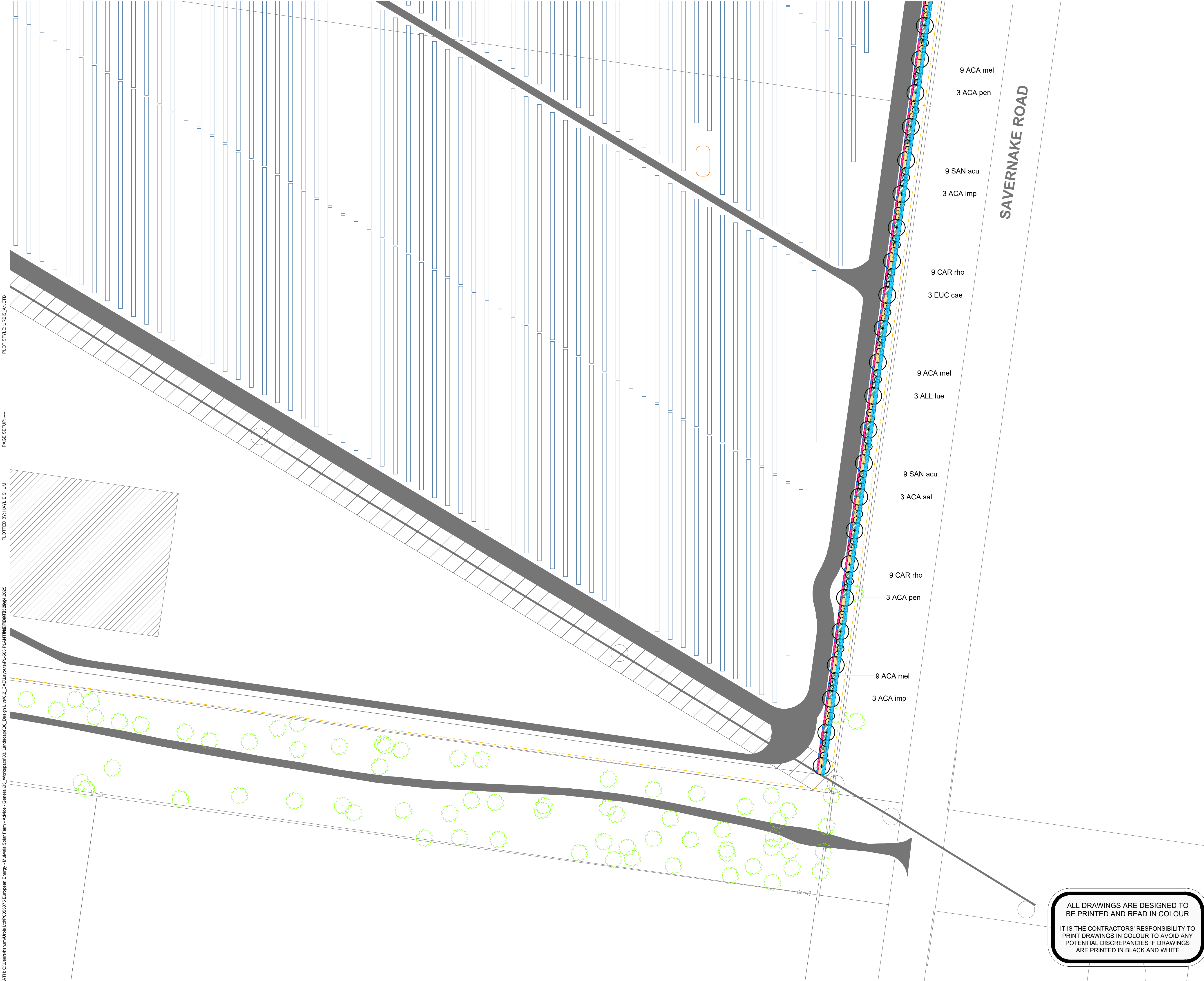
ALL DRAWINGS ARE DESIGNED TO
BE PRINTED AND READ IN COLOUR

IT IS THE CONTRACTORS' RESPONSIBILITY TO
PRINT DRAWINGS IN COLOUR TO AVOID ANY
POTENTIAL DISCREPANCIES IF DRAWINGS
ARE PRINTED IN BLACK AND WHITE



REVISION

B



PLOT STYLE: URBIS_A1.ctb

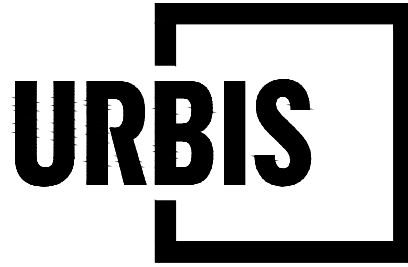
PAGE SETUP: ---

PLOTTED BY: HAYLE SUMI

PATH: C:\Users\hsumi\Urbis Ltd\Projects\2025 European Energy - Mulwala Solar Farm - Advice - General\03 - Workspaces\03 - Landscapes\03 - Design Level\2 - CAD Layouts\PL-503 PLANTING PLAN\PL-503.dwg, 29.04.2025

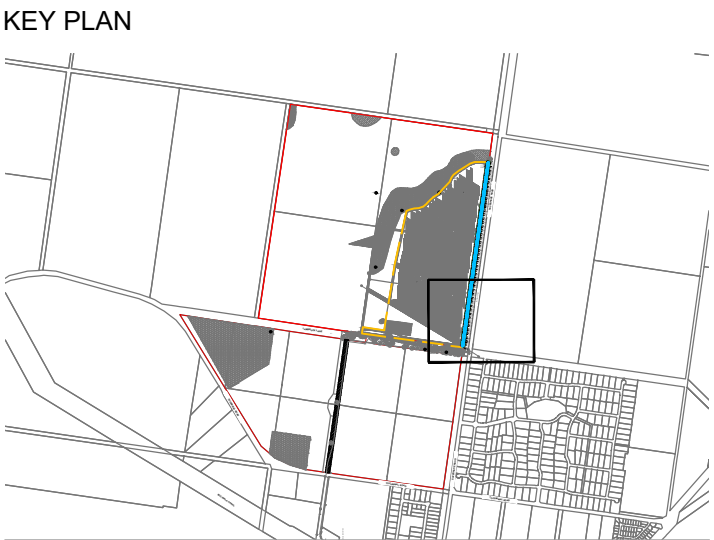
ALL DRAWINGS ARE DESIGNED TO BE PRINTED AND READ IN COLOUR

IT IS THE CONTRACTORS' RESPONSIBILITY TO PRINT DRAWINGS IN COLOUR TO AVOID ANY POTENTIAL DISCREPANCIES IF DRAWINGS ARE PRINTED IN BLACK AND WHITE



Angel Place, Level 8, 123 Pitt Street | Sydney
NSW 2000 Australia | +61 2 8233 9900
URBIS Ltd | ABN 50 105 256 228

CLIENT
EUROPEAN ENERGY AUSTRALIA PTY LTD



DISCLAIMER
Copyright by Urbis Ltd. This drawing or parts thereof may not be reproduced for any purpose or used for another project without the consent of Urbis other than reproduction for the purposes of actual ordering, supply, installation or construction. This drawing must be read in conjunction with all relevant contracts, schedules, specifications, drawings and any other issued written instructions. Do not scale from drawings. Written figured dimensions take preference to scaled dimension and must be verified on site before proceeding with any work. All discrepancies must be referred to the superintendent for a written decision prior to ordering, supply or installation. Urbis must be notified in writing of any discrepancies.

B	FOR APPROVAL	HS	NM	29.04.2025
A	FOR APPROVAL	HS	NM	14.03.2025
REV	DESCRIPTION	DWN	CHK	DATE

PROJECT NAME & ADDRESS
MULWALA SOLAR FARM
STAGE 1b

PROJECT DIRECTOR: MARK KUHNE

DRAWING TITLE
PLANTING PLAN 03

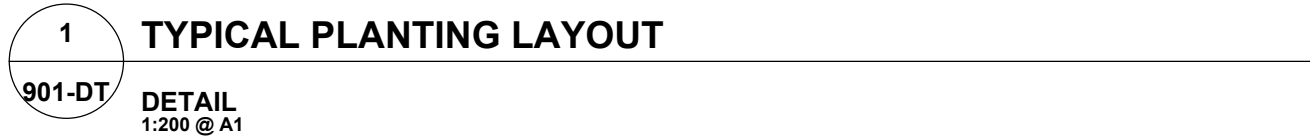
ISSUE
FOR APPROVAL

PROJECT NO.
P0055075

SCALE
1:1000 @ A1
1:2000 @ A3
10 20 30 40 50m

DRAWING NO.
PL-503

REVISION
B



The diagram illustrates the preparation of a planting hole for a native tree seedling. A cross-section shows a hole in the ground. A 1 x 600mm hardwood marker stake (25 x 25 mm) is placed vertically in the center of the hole. A 600mm jute planting square is secured to the stake. The hole is 75mm deep, and a 500mm radius of native/indigenous mulch layer is applied around the stake. The mulch is not in direct contact with the plant. The hole is excavated to at least twice the pot size, and the sides are roughened. The backfill is site topsoil. The subsoil is ripped to a depth of 450mm, with rip lines nominally 0.5m apart. The ripping covers a minimum of 25m² per tree.

- 1 x 600mm hardwood marker stake to each plant (25 x 25 mm)
- Secure jute matt 600mm planting square to each plant.
- 75mm deep semi-composted native/indigenous mulch layer to 500mm radius of each plant. Ensure mulch is not in direct contact with the plant.
- Over excavate hole by at least twice pot size. Ensure sides of hole are roughened.
- Backfill with site topsoil.
- Subsoil ripped to a depth of 450mm rip lines to be nominally 0.5m apart. Ripping to cover a min. 25m² per tree

2 TYPICAL TUBESTOCK PLANTING IN MULCHED RING BED DETAIL

901-DT
DETAIL
1:20 @ A1

IT IS THE CONTRACTORS' RESPONSIBILITY TO PRINT DRAWINGS IN COLOUR TO AVOID ANY POTENTIAL DISCREPANCIES IF DRAWINGS ARE PRINTED IN BLACK AND WHITE

KEY PLAN

Copyright by Urbis Ltd. This drawing or parts thereof may not be reproduced for any purpose or used for another project without the consent of Urbis other than reproduction for the purposes of actual ordering, supply, installation or construction. This drawing must be read in conjunction with all relevant contracts, schedules, specifications, drawings and any other issued written instructions. Do not scale from drawings. Written figured dimensions take preference to scaled dimension and must be verified on site before proceeding with any work. All discrepancies must be referred to the superintendent for a written decision prior to ordering, supply or installation. Urbis must be notified in writing of any discrepancies.

	*	*	*	*
	* *	*	*	*
	*	*	*	*
	*	*	*	*
	*	*	*	*
B	FOR APPROVAL	HS	NM	29.04.2027
A	FOR APPROVAL	DW	NM	14.03.2026
REV	DESCRIPTION	DWN	CHK	DATE

PROJECT NAME & ADDRESS

PROJECT DIRECTOR: MARK KUHNE

DRAWING TITLE
DETAILS

ISSUE	PROJECT NO.
FOR APPROVAL	P0055075

SCALE
AS SHOWN @ A1

DRAWING NO.	REVISION
-------------	----------

DT-901 B

MULWALA SOLAR FARMS

Landscape Specification –
Version - REV A

Prepared for

EUROPEAN ENERGY AUSTRALIA

29th April 2025

URBIS STAFF RESPONSIBLE FOR THIS REPORT WERE:

Director	Mark Kuhne
Associate Director	Natalie McEvoy
Landscape Architect	Haylie Shum
Project Code	P0055075

Urbis acknowledges the important contribution that Aboriginal and Torres Strait Islander people make in creating a strong and vibrant Australian society.

We acknowledge, in each of our offices, the Traditional Owners on whose land we stand.

All information supplied to Urbis in order to conduct this research has been treated in the strictest confidence. It shall only be used in this context and shall not be made available to third parties without client authorisation. Confidential information has been stored securely and data provided by respondents, as well as their identity, has been treated in the strictest confidence and all assurance given to respondents have been and shall be fulfilled.

© Urbis Pty Ltd
50 105 256 228

All Rights Reserved. No material may be reproduced without prior permission.

You must read the important disclaimer appearing within the body of this report.

urbis.com.au

CONTENTS

1.	INFORMATION TO CONTRACTORS.....	2
1.1.	Information to Contractors	2
1.2.	General.....	2
1.2.1.	Definitions and Contracts	2
1.2.2.	Documents	5
1.2.3.	Extent of work	6
1.2.4.	Variations	6
2.	PRELIMINARIES.....	7
2.1.	Scope of Works	7
2.1.1.	Site conditions.....	7
2.1.2.	Dilapidation survey.....	7
2.1.3.	Services	7
2.1.4.	Safety.....	7
2.1.5.	Environmental Protection	7
2.1.6.	Conduct.....	8
2.1.7.	Regulations	8
2.1.8.	Documentation	8
2.1.9.	Documentation by the Contractor	8
2.1.10.	Insurances	8
2.1.11.	Execution of Work	8
2.1.12.	Inspections.....	8
2.1.13.	Samples	9
2.1.14.	Materials	9
2.1.15.	Quality.....	9
3.	GRADING and cultivation.....	10
3.1.	Scope of Works	10
3.2.	Standards	10
3.3.	Debris and Rubble.....	10
3.4.	Maintenance of Existing Roads	10
3.5.	Site Clearing and Minor Grading	10
3.6.	Final Trimming.....	11
3.7.	Weed Eradication	11
3.8.	Work near Trees.....	11
3.9.	Cultivation.....	12
3.10.	Setting Out	12
3.11.	Finished Levels	12
3.12.	Services.....	12
4.	SURFACE MULCHES.....	13
4.1.	Mulch.....	13
5.	SOFT LANDSCAPE WORKS AND PLANTING	14
5.1.	Scope of Works	14
5.2.	Standards	14
5.3.	Inspection of Landscape Materials	14
5.3.1.	Inspection / Hold Point	14
5.4.	Plant Material	14
5.5.	Protection of Plants	15
5.6.	Excavating for Planting.....	15
5.7.	Planting	15
5.7.1.	Plant Containers.....	16
5.7.2.	Guards and Staking	16
5.7.3.	Fertiliser	16
5.8.	Spraying	16
5.9.	Weeding and Rubbish Removal	17

5.10.	Mulch Spreading	17
5.11.	Care and Maintenance of Planting Material	17
6.	LANDSCAPE ESTABLISHMENT	20
6.1.	Practical Completion	20
6.2.	Defects Liability/ Planting Establishment Period	20
6.2.1.	Planting Establishment.....	20
6.3.	Final Inspection and Final Certificate	21
Disclaimer		22
Appendix A Summary of Pricing		
Appendix B Schedule of Rates and Prices		

1. INFORMATION TO CONTRACTORS

1.1. INFORMATION TO CONTRACTORS

Contract

The Landscaping contractor must supply fully complete schedules and will be required to enter a formal contract with the EPC Contractor engaged to deliver the Project.

Project Description

The Mulwala Solar Farm Project (the Project) is a renewable energy facility development located in northern Victoria. The Project received the following Development Consent for the Mulwala Solar Farm:

- Mulwala Solar Farm Development Consent granted by Minister for Planning in December 2018

European Energy Australia (EEA) is responsible for the development of the Project.

The project site is located at Savernake Road, Mulwala within the Federation Council, and the traditional land of the Wiradjuri Nation. The project site is situated approximately 6 kilometres (km) north of Yarrawonga, 285km southwest of Canberra, and 230km northeast of Melbourne.

The project site is bound by Tocumwal Road to the south and Savernake Road to the east. The development footprint is approximately 420 hectares. The project site is located in the RU1 Primary Production Zone. The area in general is flat with only minor variations in elevations and has been highly modified for agriculture. The project site itself has generally been used for grazing.

1.2. GENERAL

1.2.1. Definitions and Contracts

The Principal: European Energy Australia (EEA)

EEA Project Manager: XXXXXX , Title, Mobile: xxxxxxxxxx

EPC Contractor: TBC, EPC Project Manager, Mobile: TBC

Landscape Architect (Urbis Pty Ltd [Urbis]): Natalie McEvoy, Ph – 02 8424 5196.

‘Superintendent’s Representative’: shall mean the individual appointed by the EPC Contractor to co-ordinate and inspect the works, or administer the contract, or any part thereof.

‘Site’: The area defined within the extent of landscape works shown on the Landscape Plan drawings.

‘Landscape Contractor’: The Company or person(s) responsible for, or ‘Subcontractor’, carrying out the work specified in this specification.

Table 1 Key accountabilities for Landscape Plan implementation: Construction

Role	Responsibilities	Accountabilities
EEA Project Team The Project Team will comprise the following personnel (as a minimum): <ul style="list-style-type: none"> • EEA Project Manager • EEA Site Manager • EEA HS&E Manager 	<ul style="list-style-type: none"> • Prepare and submit the Landscaping Plan and other management plans and strategies required under the Planning Permit and submit (as required) to the responsible authority for approval • Ensure compliance with the Planning Permit as set out in the EPC Contract • Engage suitably qualified personnel to manage each phase of the development • Maintain website and communication channels including email, postal address and phone line • Notify Council and DELWP of commencement of construction • Notify the Council and DELWP, and where necessary the relevant government agency, of an incident or non-compliance • Identify if an amendment to the Planning Permit is required • Review internal environmental audit reports and ensure environmental performance is maintained • Where necessary, revise the Landscaping Plan and other management plans and submit (as required) for approval to the relevant authority 	As the Applicant, EEA is accountable for ensuring compliance with the Planning Permit (consistent with the EPC Contract). This includes preparation of management plans and strategies, maintaining access to information and communication channels, providing notifications to the relevant authority and the review of internal environmental audits to ensure environmental performance
EPC Project Manager	<ul style="list-style-type: none"> • Ensure compliance with Planning Permits • Engage suitably qualified personnel to manage each phase of the development • Ensure compliance with environmental management system and associated plans • Ensure environmental monitoring is undertaken • Ensure appropriate approvals and permits are obtained • Engage suitably qualified sub-contractors • Review any plans/strategies or programs required by a development consent and notify EEA of any required changes • Notify EEA Project Manager prior to and on commencement of construction and operation • Immediately notify EEA Project Manager of any non-compliances or incidents • Participate in Independent Environmental Audits and implement recommendations • Where necessary revise the Landscaping Plan and other management plans and strategies and submit for approval to EEA 	The EPC Project Manager is responsible for providing general support to the site manager and HSE management
EPC Site Manager	<ul style="list-style-type: none"> • Maintain a working knowledge of the environmental management system and environmental management plans • Coordinate EPC incident response, including ensuring incident investigation is undertaken and corrective actions carried out • Ensure relevant training and qualifications are completed by personnel 	<p>The EPC Site Manager is responsible for the general supervision and day-to-day coordination of works on site</p> <p>The EPC Site Manager is responsible for</p>

	<ul style="list-style-type: none"> • Maintain training records for site personnel • Maintain visitor register • Facilitate pre-start meetings • Participate in Independent Environmental Audit and implement recommendations 	ensuring all works and workers comply with all management plans
EPC Health, Safety and Environment (HSE) Coordinator	<ul style="list-style-type: none"> • Maintain a working knowledge of the environmental management system, environmental management plans, and be aware of all environmental legislative requirements • Maintain working knowledge of environmental risks and impacts of the development and measures required to be put in place • Undertake a HSE Risk Assessment for the development, including a Risk Assessment for each phase of construction • Carry out site inspections and environmental monitoring • Develop a Corrective Action Register • Maintain records of compliance with the development consent and management plans • Maintain Complaints Register and respond to complaints or nominate a delegate to respond • Monitor the Complaints Register weekly to identify any trends in complaints • Investigate incidents and identify preventative actions • Prepare incident report and implement corrective actions • Manage toolbox talks • Review environmental management plans as required • Participate in Independent Environmental Audits and implement recommendations 	The EPC HSE Coordinator is responsible for overseeing the HSE management of the development
All EPC contractors and sub-contractors	<ul style="list-style-type: none"> • Undertake works in compliance with the EMS, other management plans and strategies • Complete required training and attend toolbox talks where relevant • Notify EPC Site Manager of any non-compliance or incidents 	All personnel are responsible for undertaking activities in accordance with the environmental management plans

Table 2 Key accountabilities for Landscape Plan implementation: Operation

Role	Responsibilities	Accountabilities
EEA Project Team The Project Team will comprise the following personnel (as a minimum): <ul style="list-style-type: none"> • Asset Manager • Environment Advisor • Caretaker/Land Manager 	<ul style="list-style-type: none"> • Ensure compliance with the planning permit as set out in the O&M Contract • Maintain website and communication channels including email, postal address and phoneline • Notify the relevant authority of commencement of operations, upgrading and decommissioning • Notify the relevant authority of an incident or non-compliance • Ensure environmental monitoring is undertaken • Review internal environmental audit reports and implement any require actions 	As the Applicant, EEA is accountable for ensuring compliance with the planning permit (consistent with the O&M Contract). This includes preparation of management plans, maintaining access to information and communication channels, providing notifications to the relevant authority,

	<ul style="list-style-type: none"> Where necessary, revise the [insert management plan] and other management plans and strategies and submit (as required) for approval to the relevant authority Identify if an amendment to the Planning Permit is required 	ensuring environmental monitoring is undertaken, and the review of internal environmental audits to ensure environmental performance
O&M Site Manager	<ul style="list-style-type: none"> Ensure compliance with the Integrated Management System Ensure the CEMP and other management plans are implemented Review and update the CEMP and other management plans as required Carry out site inspections and environmental monitoring Maintain complaints register and respond to complaints Manage incident response Investigate incidents and identify preventative actions Notify EEA of incidents and non-compliances Participate in Independent Environmental Audit and implement recommendations 	The O&M Site Manager is responsible for overseeing the HSE management of the development.
O&M Contractors	<ul style="list-style-type: none"> Operating in compliance with the CEMP and other management plans and the conditions of the Planning Permit Notify O&M Site Manager of any non-compliance or incidents 	All personnel are responsible for undertaking activities in accordance with the environmental management plans.

1.2.2. Documents

The Landscape Works Package includes:

- The Landscape Specification (this document);
- The Landscape Plans - drawing numbers CS-001 Cover Sheet, CS-002 Legend and Planting Schedule, PL-501 Planting Plan 01, PL-502 Planting Plan, PL-503 Planting Plan 03, DT-901 Details, which includes;
 - Planting schedule;
 - Construction details;
- The Landscape Management Plan; and
- Any other documentation, which may be issued from time to time during the tender period and the construction of the works. Refer also to documentation prepared for the project by other consultants, particularly the civil engineering drawings with regard to underground services and drainage and the Ecological Australia conservation area plans.

Review and accept the contract documents issued as being adequate to accurately price and construct the work. Report to the EPC Project Manager the adequacy of the documentation issued and any discrepancies or shortfalls in information. Failure to report will imply unqualified acceptance and understanding.

Quantities shown on drawings take precedence over scheduled quantities.

1.2.3. Extent of work

The extent of the Landscape Works Package is as indicated on the drawings. It includes carrying out all work necessary for proper completion of the soil and planting works shown on the drawings and described in the Specification Notes and Schedules. Where works are adjacent to existing works, the Landscape Contractor is responsible for making the proper integration between new and existing works and for making good any damage caused by the Landscape Contractor to the adjoining works.

1.2.4. Variations

If the Landscape Contractor intends to claim additional time and/or cost arising out of latent conditions, requests to carry out additional works, instructions or any other circumstance, they must notify the EPC Contractor in writing. The EPC Contractor is not obliged to make any additional payment or accept any increase in the contract period unless agreed prior to with the contractor.

2. PRELIMINARIES

2.1. SCOPE OF WORKS

The contractor is to comply with the following:

2.1.1. Site conditions

The Landscape Contractor is deemed to have visited the site to determine the nature of the work and to have verified and made allowance for the following conditions:

- Existing site, topographic and soil conditions;
- Site Health, Safety and Environment (HSE) and security requirements; and
- Site access and storage requirements.

2.1.2. Dilapidation survey

Prepare a dilapidation survey in the form of a detailed photographic record of the condition of adjacent structures, services, fences, poles and the like, adjacent to the works before commencing any site works. This may facilitate simple resolution of possible future disputes.

2.1.3. Services

Underground services locations have not been included in this documentation. Before commencing work, obtain measurements and other necessary information from relevant authorities, the civil engineering drawings and the EPC Project Manager. The Landscape Contractor will take every precaution necessary to secure from damage all existing gas and water service pipes, stormwater drainage lines, sewers, electrical conduits, telephone installations, other existing works or services in the area of work.

All damage caused to any services during the course of the work is to be repaired immediately, at the Landscape Contractor's expense and the Landscape Contractor must notify the relevant Authority.

2.1.4. Safety

The Landscape Contractor is responsible for carrying out the Contract in a safe manner, taking due care to prevent injuries to the public or to people involved in the project.

The Contractor is responsible for coordinating and facilitating pedestrian and vehicular traffic flow safely and unhindered around and the works/site. Provide and maintain signage, barricading and lighting as required to safely direct vehicles and pedestrians around the site.

The Landscape Contractor will immediately notify and furnish a written report to the EPC Project Manager in accordance with HSE requirements if any of the following occurs in connection with the works:

- Accidents involving death or personal injury;
- Accidents involving loss of time; and
- Incidents with accident potential such as equipment failure, collapses and the like.

2.1.5. Environmental Protection

The Landscape Contractor will ensure that all materials and the execution of the work are ecologically sound, environmentally benign and consistent with the principles of sustainable development.

The Landscape Contractor is responsible to ensure that no damage occurs to any existing trees or other plants which:

- Are beyond the extent of works; and
- Need not be removed or damaged during the course of the works.

The Landscape Contractor will take all practical precautions to ensure that dust and noise caused by the works are kept to a minimum. The Contractor will take all practical precautions to prevent the spread of dirt and mud along sealed roads. The Contractor will install siltation and sedimentation control for the work if necessary.

2.1.6. Conduct

There is to be no foul language, racist, sexist, violent or degrading behaviour.

2.1.7. Regulations

Perform work in accordance with all applicable laws, rules and regulations required by authorities having jurisdiction over such work. Provide for all inspections, fees, escorts and permits required by Federal, State and local authorities in supply, transport and handling of the specified materials.

2.1.8. Documentation

Provide all required work method statements, programs and quality assurance manuals.

2.1.9. Documentation by the Contractor

Documents, which are to be prepared and updated as required by the Landscape Contractor, include but are not limited to the following:

- Construction Program; and
- Environmental Management Plan which will include, noise, dust, vibration, sedimentation and water management controls.

These and any other documents which may be required are to be submitted to the Superintendent's Representative for review.

2.1.10. Insurances

The Landscape Contractor is to be fully insured and make all required provision for workers compensation.

2.1.11. Execution of Work

Materials and workmanship are to conform to the current edition of applicable requirements of Australian Standard specifications and codes.

If it is proposed to change the installation from that shown on the contract documents, or if changes are required by statutory authorities, submit variation documents showing the proposed changes. These are to be approved in writing by the Superintendent and/or Landscape Architect prior to installation.

Any work or materials which, in the opinion of the EPC Project Manager do not meet appropriate industry standards of workmanship or quality will be rejected. It will be the Landscape Contractor's responsibility to remove rejected work and reinstall it to an acceptable standard at no additional cost to the Client.

2.1.12. Inspections

Give not less than 48 hours' notice for the Superintendent and/or Landscape Architect to attend inspections at the following occasions, as well as those noted as "Hold Points" on the drawings:

- Setout;
- Subgrade preparation;
- Completed soil works prior to planting; and

- Plant delivery and installation.

Work is not to proceed beyond these “Hold Points” without approval from the Superintendent’s Representative. Failure to gain approvals at these hold points may result in rectification of substantial amounts of work at the Landscape Contractor’s expense.

The Landscape Architect may be requested by the Principal to inspect the works without notice at any time.

2.1.13. Samples

Provide samples and product information / details for all materials for written approval by the and/or Superintendent’s Representative prior to installation.

2.1.14. Materials

Samples, product / supplier details and technical information for all materials and proprietary items are to be submitted to the Superintendent’s Representative for written approval prior to inclusion into the works.

2.1.15. Quality

Any work or materials which, in the opinion of the Superintendent’s Representative and/or Landscape Architect, do not meet appropriate industry standards of workmanship or quality will be rejected. It will be the Landscape Contractor’s responsibility to remove rejected work and reinstall it to an acceptable standard at no additional cost to the client.

3. GRADING AND CULTIVATION

3.1. SCOPE OF WORKS

Landscape earthworks shall consist of the supply and installation of all plant and materials required for cultivation and final trimming of grades and topsoiling as required. The Landscape Contractor will be required to achieve smooth, even grading to landscape areas. Levels of fencing, swales and access tracks abutting planting areas are specified on the EPC Contractor's IFC Project drawings.

3.2. STANDARDS

Work carried out and testing performed under this Section of the Specification shall comply with the requirements of the following Standards to the extent that they are relevant and not overridden by the Specification.

- AS 4454 (2003) Australian Standard for Composts, Soil Conditioners and Mulches.

3.3. DEBRIS AND RUBBLE

The Landscape Contractor shall allow to remove existing plant matter (where indicated), debris, rubble or other materials likely to interfere with the new work, whether specifically shown on the Drawings or not, and consolidate the filling resulting from any resulting excavations.

3.4. MAINTENANCE OF EXISTING ROADS

CLEAN: All existing roads adjacent to the work site are to be clean of any material deposited, spilled or blown from the work under the Contract by any method that minimises dust and run-off. Non-soluble materials will not be permitted to be washed into any drainage system. Minimise the occurrence of and remove immediately any material which could be a hazard or nuisance to vehicular traffic.

Minimise the discharge of soluble materials and soils into the drainage system in accordance with the project EMP.

REPAIR: Any damage to existing roads caused by the Landscape Contractor is to be repaired to the original condition to the satisfaction of the Superintendent's Representative.

3.5. SITE CLEARING AND MINOR GRADING

LOCATION: Clear only the site areas as shown on the Drawings as planted areas or as directed by the Superintendent's Representative.

CLEARING: Remove from site to legal disposal, everything on or above the site surface, including rubbish, vegetable matter and organic debris, scrub, timber, old works, stumps, boulders, rubble and the like not indicated to be retained. Where concrete, diesel oil or any other material harmful to vegetation has been spilt on the topsoil or subgrade, the affected areas shall be excavated and spoil removed from site.

Trees are not to be removed.

All clearing and earthworks shall be carried out to minimise damage to existing topsoil. Caution is to be taken to avoid damage to topsoil by ceasing work with machinery in wet conditions.

PROTECTION: Adequately protect from damage all structures, trees and other plants which need not be removed or destroyed for construction operations, or which are shown on the drawings and/or specified to be retained, or which are beyond the limits allowed to the Landscape Contractor as shown.

MINOR GRADING: Supply all the machinery and equipment necessary to do the job in an efficient manner. All earthworks shall be carried out in accordance with finished levels indicated on drawings, and to ensure water drains to swales.

Construct filling out of approved material in layers approximately 150mm thick compacted sufficiently to minimise slumping and further internal packing down.

3.6. FINAL TRIMMING

The Landscape Contractor will be required to carry out final trimming of the entire area of landscape works of grades achieved by themselves, as well as any interface areas with the Engineering Contractor, such as entry gateways and along track edges. It is the responsibility of the Landscape Contractor to inspect the levels achieved by the Engineering Contractor in interface areas prior to accepting them. Any areas of discrepancy from the Drawings should be brought to the attention of the Superintendent's Representative.

The Landscape Contractor will be responsible for the final trimming of the grades over the site to allow establishment of landscape areas at the required levels. The fine grading is to ensure a smooth surface and uniform cross-sections, with a tolerance of $\pm 100\text{mm}$.

SPOIL: Remove from site all vegetative material resulting from clearing.

MAINTENANCE: After rainfall inspect, clean, and repair if required, temporary erosion and sediment control works.

REMOVAL: Remove temporary erosion control measures when they are no longer required.

3.7. WEED ERADICATION

GENERALLY: Eradicate all existing weeds by environmentally acceptable methods as approved by the Superintendent's Representative prior to planting. For highly invasive and rhizomous species, ensure that all plant material is dead prior to cultivation occurring. This may require a number of applications of herbicide to ensure all rhizomous material is dead. Continue eradication throughout the course of the works and the Plant Establishment Period.

HERBICIDE TYPES: Non residual / translocated such as Monsanto "Round-up"™.

3.8. WORK NEAR TREES

PROTECTION: Protect trees and their root zone as specified, or shown to be retained, from damage by ground works. Ensure the survival of growth of existing trees. Where indicated, protect and preserve trees during construction operations by fencing or armouring.

Take necessary precautions, including the following:

HARMFUL MATERIALS: Do not store or otherwise place bulk materials and harmful materials within drip line of trees. Do not place spoil from excavations against tree trunks, even for short periods. Prevent wind-blown materials such as cement from harming trees and plants.

STORAGE: Storage of materials, mixing of materials, vehicle parking, disposal of liquids, machinery repairs and refuelling, site office and sheds shall not occur within the drip line of any existing trees.

DAMAGE: Prevent damage to tree bark. Do not attach stays, guys and the like to trees. Make good any damage to a tree's crown or root system as soon as possible by a qualified Arborist. When a tree has been damaged to such an extent that it must be removed, the Contractor shall at no variation to the contract provide a new suitable approved tree as directed by the Superintendent's Representative.

WORK UNDER TREES: Do not add or remove topsoil within the drip line of trees. If it is necessary to excavate within the drip line, use hand methods such that root systems are preserved intact and undamaged. Open up excavations under tree canopies for as short a period as possible. Trees shall not be removed or lopped, unless specified and approval to do so is given by the Superintendent's Representative.

ROOTS: Do not cut tree roots exceeding 50mm diameter unless permitted. Where it is necessary to cut tree roots, use means such that the cutting does not unduly disturb the remaining root system. Immediately after cutting, apply a bituminous fungicidal sealant to the cut surface to prevent the incursion of rot or disease.

BACKFILLING: Backfill to excavations around tree roots with a mixture consisting of three parts by volume of topsoil and one part of well-rotted compost with a neutral pH value, free from weed growth and harmful materials. Place the backfill layers, each of 300mm maximum depth, compacted to a dry density similar to that of the original or surrounding soil. Do not backfill around tree trunks to a height greater than 200mm above the original ground surface. Immediately after backfilling, thoroughly water the root zone surrounding the tree.

COMPACTED GROUND: Avoid compaction of the ground under trees. If compaction nevertheless occurs, for example from the operation of heavy constructional plant, loosen the soil by coring.

3.9. CULTIVATION

PREPARATION: Remove existing dead weed material as specified in WEED ERADICATION.

CULTIVATION: Cultivate by ripping to the depths specified below to loosen the compacted ground and allow for root penetration. Do not disturb services or tree roots around retained trees. If necessary, cultivate these areas by hand.

DELETERIOUS MATERIAL: Remove stones exceeding 50mm, and any other deleterious material brought to the surface during cultivation, including roots, sticks, weeds and the like.

CULTIVATION DEPTHS: Cultivate the topsoil including areas of placed fill material, to the minimum depths specified below, as applicable. The surface gradients of mounded areas of fill material in garden bed areas should not be steeper than 1 vertical to 3 horizontal. Cultivation requirements are:

MASS PLANTED AREAS: Deep rip with tynes with a spacing of 500mm to a minimum of 450mm below required finished surface levels. Further cultivate the soil to 300mm depth and work soil so that it forms clods of a maximum size of 50mm diameter.

3.10. SETTING OUT

Prior to commencing the works, set out alignments of all planting for inspection and approval by the Superintendent's Representative.

3.11. FINISHED LEVELS

Rake over cultivated soil surfaces lightly to attain required finished profiles. The finished surface of the soil shall finish 50 mm below adjacent finished surface levels of access tracks.

3.12. SERVICES

By others – refer to Project design specifications and drawings.

4. SURFACE MULCHES

4.1. MULCH

GENERALLY: Ensure all mulch is free from any debris, weeds and seeds.

MULCH TYPE: Semi-composted native/indigenous plant material or equivalent approved in accordance with AS 4454 (2003).

INSTALLATION: Provide 75mm depth of mulch to around each plant to 500mm radius. Ensure mulch is not placed in direct contact with the main stems of plants.

4.2. JUTE MATTING

GENERALLY: Ensure ground is weed free prior to placement.

JUTE MAT TYPE: SureJute Planting Squares, 740gsm, 600mm square, or similar approved.

INSTALLATION: Locate centrally over excavated plant hole. Fix hardwood stake and cover jute mat with approved mulch to 75mm depth and 500mm radius from centre of plant stem.

5. SOFT LANDSCAPE WORKS AND PLANTING

5.1. SCOPE OF WORKS

The works to be executed under this section consist of the supply of all materials, plant and labour for the following:

- Preparation and cultivation of all mass planted areas, including the supply and spread of mulch;
- Planting of all trees, shrubs and grasses/tufting plants; and
- Supply of all materials and labour to plant the site and to meet the requirements specified here and on the Drawings.

Refer to the Plant Schedule and Schedule of Works.

5.2. STANDARDS

The following Standards shall apply to the work to be carried out under this Contract.

- “AS4419 (int) - 1996 & AS4454-1997”;
- “Natspec Guide 2-Purchasing Landscape Trees”; and
- “Specifying Trees: A Guide to Assessment of Tree Quality”.

5.3. INSPECTION OF LANDSCAPE MATERIALS

All soil and any other landscape material will be subject to inspection by, and approval of, the Superintendent's Representative.

All materials liable to deteriorate by exposure to the weather shall be kept under cover and the Landscape Contractor shall be held responsible for loss, or deterioration occurring during the course of loading, unloading, transit or storage, no matter how the damage is caused.

5.3.1. Inspection / Hold Point

The setting out of the main structure of the planting layout shall be approved by the Superintendent's Representative prior to planting taking place.

5.4. PLANT MATERIAL

Plant material shall be general in accordance with:

- “Natspec Guide 2-Purchasing Landscape Trees” - Construction Information Systems Australia Pty Ltd (02) 9929 1499; and
- “Specifying Trees: A Guide to Assessment of Tree Quality” - Construction Information Systems Australia Pty Ltd and Ross Clark 2003.

All plants supplied shall be well grown established specimens true to form for their species. They shall be in a vigorous and healthy state, free of defect, disease, fungus, insects, weeds or any other impediment to their future growth. All trees shall have a single leading shoot, unless specified otherwise. All plants which have not been adequately hardened off will not be accepted. Indigenous species are to be of local provenance, their origin being consistent with the generally applied application of the terminology.

Plants shall not exhibit signs of having been stressed at any stage during their development due to inadequate watering, excessive shade or sunlight. Any plants which have suffered physical damage or have a restricted habit due to growth in nursery rows shall be rejected.

All plants shall have been grown in their final containers for a sufficient period of time to allow for substantial new root growth to have been produced therein and the size of the plant shall be in reasonable proportion to the size of that container. Trees and shrubs shall have been grown in their final containers for not less than 13 weeks.

The root system shall also be well proportioned in relation to size of the plant and shall be conducive to successful transplantation. The root ball shall be free of any indication of having been restricted or damaged. Root conditions of plants may be determined by removing plants from their containers and inspecting them. Where it is decided to remove the soil from the roots of any plants, the number so disturbed will not exceed 1% of the total of each of the species or variety where the number specified exceeds 100, or one sample if the number specified is less than 100. Any root-bound stock shall be rejected.

If sample plants are found to be defective, the entire line represented by the defective sample may be rejected. Alternatively, the Superintendent's Representative may direct that plants with defective root systems be treated to correct the defects before planting.

Sample plants rendered unsuitable for use as a result of inspection shall be replaced at no additional cost.

At least one plant of each species in a batch shall be clearly labelled with its species name.

Availability of all plant materials is to be arranged prior to submitting tenders. Written confirmation is to be provided with tender documents.

It is the responsibility of the Landscape Contractor to ensure that plant materials are of the number, species and variety, size, quality and condition as shown on the Drawings.

5.5. PROTECTION OF PLANTS

All plant material shall be planted within 12 hours or one working day after delivery to the site and adequately protected from heat, frost and winds and be properly cared for until planted. Where plants are to be stored on site beyond this timeframe, written approval shall first be given by the Superintendent's Representative prior to storage. For the period during which the plants are stored the site shall be secure, protected from extremes in weather or climate and plants shall be able to be adequately watered.

5.6. EXCAVATING FOR PLANTING

MASS PLANTING AREAS: Excavate a hole for each plant large enough to provide not less than 100mm all-round the root system of the plant, or as shown on the Drawings.

5.7. PLANTING

GENERALLY: The Landscape Contractor shall notify the Superintendent's Representative immediately should any of the pre-ordered plant material not be vigorous, well established, hardened off, of good form consistent with species or variety, not soft or forced, free from disease and insect pests, with large healthy root systems and no evidence of having been restricted or damaged. Trees shall have a single leading shoot.

LOCATIONS: Do not vary the plant locations from those shown on the Drawings unless otherwise directed. If it appears necessary to vary the location and spacing to avoid service lines, or to cover the area uniformly, or for similar reasons, apply to the Superintendent's Representative for directions.

PLANTING CONDITIONS: Do not plant in unsuitable weather conditions such as extreme heat, cold, wind or rain. Suspend excavation in other than sandy soils when the soil is saturated or during frost periods.

WATERING: Thoroughly water the plants before planting begins, immediately after planting, and thereafter as required to maintain growth rates free of stress.

No planting shall commence until the proposed watering services and equipment for initial establishment is installed and properly functioning.

FERTILISING: As specified in FERTILISER.

DEPTH OF PLANTING: When the plant is in its final position in its hole or bed the topsoil level of the plant root ball shall be level with the finished surface of the soil surrounding the hole or bed. Test the depth by measuring the sides of containers. If backfilling is required to correct the depth, use approved site topsoil.

PLACING: When the hole or bed appears to be of correct size, and not before, remove the plant from the container with minimum disturbance to the root ball, and place it in its final position, in the centre of the hole and plumb.

BACKFILLING: Backfill with local site topsoil.

GROUNDWORKS: Lightly tap down the mixture and water to eliminate air pockets.

LABELLING: The Landscape Contractor shall ensure that at least one (1) plant in fifty (50) of each species or variety in a planting bed is labelled with a durable, readable tag.

LABELS AND TIES: Remove and dispose of all plant labels and ties after planting.

PRE-ORDER PLANT SUPPLY: Shall be as specified in APPROVED SUPPLIERS.

PLANT DELIVERY: Plant material shall be delivered to the site within seven (7) days of notification by the Landscape Contractor that the plants are required.

SUBSTITUTIONS: The Landscape Contractor shall make no substitutions unless approved in writing by the Superintendent's Representative. Substitutions will not be approved if the Landscape Contractor has not complied with the Specification.

REPLACEMENTS: The Landscape Contractor shall replace, with plants of the same specified type, quality and size, any plants which fail, are stolen or are damaged during the work under the Contract.

STORAGE: Wherever possible, plants shall be planted immediately after delivery to the site. If this is not possible, keep them in good condition by appropriate storage methods, or as may be directed by the Superintendent's Representative. The Landscape Contractor is responsible to prevent theft, drying out or damage from any cause including frost, wind, sun, vermin, animals and the like. The Landscape Contractor shall provide an on-site nursery, for holding plant stock on site for more than 48 hours, of sufficient size with provision for watering.

5.7.1. Plant Containers

SIZES: Supply plants in weed-free containers of the sizes specified in the PLANT SCHEDULE as shown on the Drawings.

5.7.2. Guards and Staking

All plants are to be marked with 25mm x 25mm x 900mm HW stake immediately after planting.

5.7.3. Fertiliser

DELIVERY: Deliver fertiliser to the site in sealed bags, branded with type and manufacturer.

Fertiliser type and application shall be as follows:

SHRUBS, TUFTING AND GROUND COVER SPECIES IN PLANTING BEDS: Allow for the supply and application Osmocote "Native Gardens" slow-release fertilizer applied at the manufacturer's recommended rate to the root zone.

5.8. SPRAYING

REPORTING: Report any evidence of insect attack or disease amongst plant material immediately it is noted.

SPRAYING: If so directed, spray with an insecticide and/or fungicide in accordance with the manufacturer's recommendations. Any such preparation shall be approved by the Superintendent's Representative prior to use. Use pesticides and/or fungicides only if authorised, and in compliance with statutory requirements.

5.9. WEEDING AND RUBBISH REMOVAL

GENERALLY: Collect empty plant containers daily during planting operations and remove or store on site for later removal if permitted, but ensure they are not able to be scattered by wind or other causes.

Regularly remove by hand, rubbish and weed growth that may occur or recur throughout planted and mulched areas.

5.10. MULCH SPREADING

GENERALLY: Spread approved mulch evenly to a depth of 75mm or as shown on the drawings.

5.11. CARE AND MAINTENANCE OF PLANTING MATERIAL

Throughout the duration of the Contract and maintenance period the Landscape Contractor shall be responsible for the watering of plants, weeding, fertilising, all seasonal spraying and pruning of trees. All plants shall be maintained in a healthy, vigorous condition at all times.

6. LANDSCAPE ESTABLISHMENT

6.1. PRACTICAL COMPLETION

When the Landscape Contractor considers that the works have been substantially completed, they shall advise the Superintendent's Representative in writing to that effect. Upon receipt of such advice, the Superintendent's Representative shall make a complete list of any defects, incomplete items or works and work still to be carried out by the Contractor and issue a dated copy to the Contractor.

The Landscape Contractor shall within a period of 30 days from the date of issue of such a list remedy all defects and carry out and complete all works so listed. Upon completion thereof to the satisfaction of the Superintendent's Representative the Certificate of Practical Completion of the Works shall be issued, stating the date of Practical Completion of the works.

PRACTICAL COMPLETION OF PLANTING: Practical Completion of the planting works shall include but not be limited to the replacement of mulch and plants which have failed or been damaged or stolen during the work under the Contract.

It shall be the responsibility of the Landscape Contractor to maintain and upkeep all works carried out under the contract until the date of issue of the Certificate of Practical Completion.

6.2. DEFECTS LIABILITY/PLANTING ESTABLISHMENT PERIOD

COMMENCEMENT: The Defects Liability/Planting Establishment Period shall commence from the Date of Practical Completion of the works.

DURATION: The Planting Establishment Period shall be fifty two (52) weeks.

6.2.1. Planting Establishment

RECURRENT WORKS: Throughout the Planting Establishment Period continue to carry out recurrent works of a maintenance nature specified elsewhere in this Section, including but not limited to watering, weeding, fertilising, pest and disease control, staking and tying, replanting, cultivating, pruning, aerating, renovating, top dressing, mulching, edging, keeping the site neat and tidy, and the like.

REPLACEMENTS: The Landscape Contractor shall be responsible for protecting the works and making good any vandalism, or malicious damage up to Practical Completion. All plant materials which fail during the Plant Establishment Period due to inadequate or incorrect maintenance by the Landscape Contractor are to be replaced at the Landscape Contractor's own expense. Plants lost due to vandalism or accident after Practical Completion, and beyond the control of the Landscape Contractor, are to be replaced at the EPC Contractor's expense, if required. The Landscape Contractor shall notify the Superintendent's Representative of vandalised elements or stolen plants, in writing on a fortnightly basis.

Continue to replace failed, damaged or stolen plants as specified.

MULCHED SURFACES: Maintain in a clean and tidy condition and reinstate the mulch as necessary to the specified depths.

MAINTENANCE PROGRAM: Furnish a proposed planting maintenance program, and amend it as required until approved by the Superintendent's Representative. Comply with the approved program.

MAINTENANCE LOG BOOK: Keep a log book recording when and what maintenance work has been done and what materials, including toxic materials, have been used. Make the log book available for inspection upon request.

GENERALLY: The Landscape Contractor shall be deemed to have made adequate allowance in their tender price for compliance with each of the above requirements.

If, while the Landscape Contractor is on site for the purpose of up-keep or of making good any defect, there occur any losses of or damage or injury to the work or to any other property or to any person, the Landscape

Contractors liability in respect thereof shall be the same as if the same losses, damage or injury had occurred before any part of the works had been taken over by the EPC Contractor.

If the Landscape Contractor replaces or renews any portion of the work, the General Conditions of Contract and the provisions of this Specification shall apply to the portion of the work so replaced or renewed and the Planting Establishment/Defects Liability Period for it shall begin on the date on which it is so replaced and/or renewed and shall continue for fifty two (52) weeks.

The Landscape Contractors responsibility under this clause shall include the provision of all labour and materials and the meeting of all costs associated with the removal of defective materials and plants.

This condition shall operate irrespective of the fact that such part or parts of the work may have been accepted by the Superintendent's Representative.

6.3. FINAL INSPECTION AND FINAL CERTIFICATE

At the end of the Planting Establishment Period, an inspection will be made by the Superintendent's Representative to ensure that all works under the Contract have been finally and satisfactorily executed by the Landscape Contractor.

DISCLAIMER

This report is dated 29 April 2025 and incorporates information and events up to that date only and excludes any information arising, or event occurring, after that date which may affect the validity of Urbis Pty Ltd (**Urbis**) opinion in this report. Urbis prepared this report on the instructions, and for the benefit only, of European Energy Australia (**Instructing Party**) for the purpose of Landscape Plan (**Purpose**) and not for any other purpose or use. To the extent permitted by applicable law, Urbis expressly disclaims all liability, whether direct or indirect, to the Instructing Party which relies or purports to rely on this report for any purpose other than the Purpose, and to any other person which relies or purports to rely on this report for any purpose whatsoever (including the Purpose).

In preparing this report, Urbis was required to make judgements which may be affected by unforeseen future events, the likelihood and effects of which are not capable of precise assessment.

All surveys, forecasts, projections and recommendations contained in or associated with this report are made in good faith and on the basis of information supplied to Urbis at the date of this report, and upon which Urbis relied. Achievement of the projections and budgets set out in this report will depend, among other things, on the actions of others over which Urbis has no control.

In preparing this report, Urbis may rely on or refer to documents in a language other than English, which Urbis may arrange to be translated. Urbis is not responsible for the accuracy or completeness of such translations and disclaims any liability for any statement or opinion made in this report being inaccurate or incomplete arising from such translations.

Whilst Urbis has made all reasonable inquiries it believes necessary in preparing this report, it is not responsible for determining the completeness or accuracy of information provided to it. Urbis (including its officers and personnel) is not liable for any errors or omissions, including in information provided by the Instructing Party or another person or upon which Urbis relies, provided that such errors or omissions are not made by Urbis recklessly or in bad faith.

This report has been prepared with due care and diligence by Urbis and the statements and opinions given by Urbis in this report are given in good faith and in the reasonable belief that they are correct and not misleading, subject to the limitations above.

APPENDIX A

SUMMARY OF PRICING

CONSTRUCTION DATA SCHEDULE A: SUMMARY OF PRICING

The following information shall be completed and returned at the time of tendering, as part of the tender.

Contractors are to provide rates for the following items to be used for the purpose of valuing variations and the like. Rates are to be all inclusive of supervision, overheads, profit, waste, etc. Prices are to include for all temporary works such as safety fencing, planking and strutting, timbering, over excavation or backfilling, etc.

ITEM	DESCRIPTION	UNIT	QTY	RATE	TOTAL
1.0	Site Establishment				
1.1	Include all costs for setting up of works.	Item			\$
	TOTAL SITE ESTABLISHMENT				\$
2.0	Preliminaries				
2.1	Include all costs for complying with the Specification and General Conditions of Contract including insurances.	Item			\$
	TOTAL PRELIMINARIES				\$
3.0	Site Preparation & Earthworks				
3.1	Allow for demolition and clearing of existing vegetation where required.	m ²			\$
3.3	Allow for basic trimming of grades to all soft landscape areas.	m ²			\$
3.4	Allow for liaison with other contractors.	Item			\$
3.5	Allow for all survey / set out works required.	Item			\$
3.6	Allow for pruning of existing trees where required.	Prov.sum			\$
	TOTAL SITE PREPARATION & EARTHWORKS				\$
4.0	Topsoil				
4.1	Allow for the cultivation and grading of existing site topsoil in all landscape areas as detailed and specified.	m ²			\$
	TOTAL TOPSOIL PREPARATION				\$
5.0	Planting				
5.1	Allow for the supply and planting of tubestock container plants to areas as detailed and specified.	each			\$
5.2	Supply HW stakes to each plant as detailed and specified.	each			\$
	TOTAL PLANTINGS				\$
6.0	Mulching and Jute Mats				
6.1	Allow for the supply and spreading of semi-composted native/indigenous plant material mulch to all planting areas as detailed and specified.	m ²			\$
6.2	Allow for supply and installation of SureJute Planting Squares, 740gsm, 600mm square, or similar approved to each plant.	each			\$
	TOTAL MULCHING AND JUTE MATS				\$

7.0 Consolidation

7.1	Allow for maintaining all landscape works for a period of 52-weeks from the date of Practical Completion	Per-Week	\$
-----	--	----------	----

TOTAL CONSOLIDATION			\$
----------------------------	--	--	-----------

8.0 Any Other Items Not Included In Above

8.1	Other		
-----	-------	--	--

TOTAL ANY OTHER ITEMS NOT INCLUDED IN ITEMS 1.0 - 7.0			\$
--	--	--	-----------

9.0	Allow for Contingency Sum		\$
------------	----------------------------------	--	-----------

10.0	LUMP SUM TOTAL		\$
-------------	-----------------------	--	-----------

Signature _____

Signatory's Title _____

CONSTRUCTION DATA SCHEDULE B: SCHEDULE OF RATES AND PRICES

Contractors are to provide rates for the following 'additional items' to be used for the purpose of making variations and the like. Rates below are to be all inclusive of supervision, overheads, profit, waste, etc.

The rates below may correspond to items in Schedule A. All rates are required in both schedules, it is the responsibility of the Contractor to cross-reference where required.

ITEM	DESCRIPTION	UNIT	RATE (\$)
	Site clearing and coarse grading.	m ²	
	Cultivation and final grading of existing site soil.	m ³	
	Supply and planting of tubestock.	each	
	Supply and apply Osmocote slow-release fertilizer per plant.	each	
	Supply and installation of tree stakes per plant.	each	
	Supply and installation of Jute Matting per plant.	each	
	Supply and spreading of 75mm depth mulch as specified per plant.	m ²	
	Supply and installation of stock-proof fencing.	lm	
	Maintenance of contract works including soft-works and irrigation	Monthly	

Complete aftercare and maintenance during 52 week consolidation period.

Signature _____

Signatory's Title _____

MULWALA SOLAR FARMS

Landscape Maintenance Plan

Prepared for

EUROPEAN ENERGY AUSTRALIA

29th April 2025

URBIS STAFF RESPONSIBLE FOR THIS REPORT WERE:

Director	Mark Kuhne
Associate Director	Natalie McEvoy
Landscape Architect Consultant	Haylie Shum
Project Code	P0055075

**Urbis acknowledges the important contribution that
Aboriginal and Torres Strait Islander people make in
creating a strong and vibrant Australian society.**

**We acknowledge, in each of our offices, the Traditional
Owners on whose land we stand.**

All information supplied to Urbis in order to conduct this research has been treated in the strictest confidence. It shall only be used in this context and shall not be made available to third parties without client authorisation. Confidential information has been stored securely and data provided by respondents, as well as their identity, has been treated in the strictest confidence and all assurance given to respondents have been and shall be fulfilled.

© Urbis Pty Ltd
50 105 256 228

All Rights Reserved. No material may be reproduced without prior permission.

You must read the important disclaimer appearing within the body of this report.

urbis.com.au

CONTENTS

1.	Introduction	1
2.	Implementation Responsibilities	2
2.1.	Construction Phase accountabilities	2
2.2.	Operational Accountabilities	4
3.	Approach to Landscape Establishment	5
3.1.	Overview	5
3.2.	Removal of Weeds	5
3.3.	Soil Cultivation.....	5
3.4.	Planting	5
3.5.	Programming	6
4.	Management.....	7
4.1.	Weed Management	7
4.2.	Plant Management	7
4.3.	Programming and Frequency	7
	Disclaimer	9

1. INTRODUCTION

Contract

This Landscape Maintenance Plan (the Plan) has been prepared for European Energy Australia (EEA) to support the establishment of screening vegetation, documented in Landscape Screening Plans, around the perimeters of the Mulwala Solar Farm. EEA received the following Development Consent for the Mulwala Solar Farm:

- Mulwala Solar Farm Development Consent granted by Minister for Planning in December 2018

The Plan has been prepared in accordance with Schedule 3 Environmental Conditions – General, Conditions 7 and 8 of Development Consent SSD 9039, in order to obtain endorsement from the relevant authorities.

The scope of work required to discharge the permit conditions is outlined below:

Development Consent SSD9039

LANDSCAPING

Vegetation Buffer

7. The Applicant must establish and maintain a mature vegetation buffer (landscape screening) at the locations outlined in the figure in Appendix 1 to the satisfaction of the Secretary. This vegetation buffer must:

- (a) be planted prior to commencing operations;
- (b) consist of species that facilitate the best possible outcome in terms of visual screening;
- (c) within 3 years of commencing construction, effectively screen views of the solar panels and ancillary infrastructure on-site from surrounding residences; and
- (d) be properly maintained with appropriate weed management.

Landscaping Plan

8. Prior to commencing construction, the Applicant must prepare a detailed Landscaping Plan for the development in consultation with Council and RMS, to the satisfaction of the Secretary. This plan must include:

- (a) a description of measures that would be implemented to ensure that the vegetated buffer achieves the objectives of condition 7 (b) – (d) of this consent;
- (b) include a program to monitor and report on the effectiveness of these measures; and
- (c) include details of who would be responsible for monitoring, reviewing and implementing the plan, and timeframes for the completion of actions.

Following the Secretary's approval, the Applicant must implement the Landscaping Plan.

2. IMPLEMENTATION RESPONSIBILITIES

2.1. CONSTRUCTION PHASE ACCOUNTABILITIES

Key accountabilities for the implementation of the landscape plan during the construction phase between EEA and the EPC Contractor will be set out in the EPC Contract and are shown in **Table 1**.

Table 1 Key accountabilities for Landscape Plan implementation: Construction

Role	Responsibilities	Accountabilities
EEA Project Team The Project Team will comprise the following personnel (as a minimum): <ul style="list-style-type: none"> • EEA Project Manager • EEA Site Manager • EEA HS&E Manager 	<ul style="list-style-type: none"> • Prepare and submit the Landscaping Plan, Landscape Specification and Landscape Management Plan required under the Planning Permit and submit (as required) to the responsible authority for approval • Ensure compliance with the Planning Permit as set out in the EPC Contract • Engage suitably qualified personnel to manage each phase of the development • Maintain website and communication channels including email, postal address and phone line • Notify Council and DELWP of commencement of construction • Notify the Council and DELWP, and where necessary the relevant government agency, of an incident or non-compliance • Identify if an amendment to the Planning Permit is required • Review internal environmental audit reports and ensure environmental performance is maintained • Where necessary, revise the Landscaping Plan and other management plans and submit (as required) for approval to the relevant authority 	As the Applicant, EEA is accountable for ensuring compliance with the Planning Permit (consistent with the EPC Contract). This includes preparation of management plans and strategies, maintaining access to information and communication channels, providing notifications to the relevant authority and the review of internal environmental audits to ensure environmental performance
EPC Project Manager	<ul style="list-style-type: none"> • Ensure compliance with Planning Permits • Engage suitably qualified personnel to manage each phase of the development • Ensure compliance with environmental management system and associated plans • Ensure environmental monitoring is undertaken • Ensure appropriate approvals and permits are obtained • Engage suitably qualified sub-contractors • Review any plans/strategies or programs required by a development consent and notify EEA of any required changes • Notify EEA Project Manager prior to and on commencement of construction and operation • Immediately notify EEA Project Manager of any non-compliances or incidents • Participate in Independent Environmental Audits and implement recommendations 	The EPC Project Manager is responsible for providing general support to the site manager and HSE management

	<ul style="list-style-type: none"> Where necessary revise the Landscaping Plan and other management plans and strategies and submit for approval to EEA 	
EPC Site Manager	<ul style="list-style-type: none"> Maintain a working knowledge of the environmental management system and environmental management plans Coordinate EPC incident response, including ensuring incident investigation is undertaken and corrective actions carried out Ensure relevant training and qualifications are completed by personnel Maintain training records for site personnel Maintain visitor register Facilitate pre-start meetings Participate in Independent Environmental Audit and implement recommendations 	<p>The EPC Site Manager is responsible for the general supervision and day-to-day coordination of works on site</p> <p>The EPC Site Manager is responsible for ensuring all works and workers comply with all management plans</p>
EPC Health, Safety and Environment (HSE) Coordinator	<ul style="list-style-type: none"> Maintain a working knowledge of the environmental management system, environmental management plans, and be aware of all environmental legislative requirements Maintain working knowledge of environmental risks and impacts of the development and measures required to be put in place Undertake a HSE Risk Assessment for the development, including a Risk Assessment for each phase of construction Carry out site inspections and environmental monitoring Develop a Corrective Action Register Maintain records of compliance with the development consent and management plans Maintain Complaints Register and respond to complaints or nominate a delegate to respond Monitor the Complaints Register weekly to identify any trends in complaints Investigate incidents and identify preventative actions Prepare incident report and implement corrective actions Manage toolbox talks Review environmental management plans as required Participate in Independent Environmental Audits and implement recommendations 	<p>The EPC HSE Coordinator is responsible for overseeing the HSE management of the development</p>
All EPC contractors and sub-contractors	<ul style="list-style-type: none"> Undertake works in compliance with the EMS, other management plans and strategies Complete required training and attend toolbox talks where relevant Notify EPC Site Manager of any non-compliance or incidents 	<p>All personnel are responsible for undertaking activities in accordance with the environmental management plans</p>

2.2. OPERATIONAL ACCOUNTABILITIES

As with the construction phase, the division of responsibilities between EEA and the O&M Contractor will be set out in the O&M Contract. Key responsibilities and accountabilities are reflected in **Table 2** below.

Table 2 Key accountabilities for Landscape Plan implementation: Operation

Role	Responsibilities	Accountabilities
EEA Project Team The Project Team will comprise the following personnel (as a minimum): <ul style="list-style-type: none"> Asset Manager Environment Advisor Caretaker/Land Manager 	<ul style="list-style-type: none"> Ensure compliance with the planning permit as set out in the O&M Contract Maintain website and communication channels including email, postal address and phonenumber Notify the relevant authority of commencement of operations, upgrading and decommissioning Notify the relevant authority of an incident or non-compliance Ensure environmental monitoring is undertaken Review internal environmental audit reports and implement any require actions Where necessary, revise the [insert management plan] and other management plans and strategies and submit (as required) for approval to the relevant authority Identify if an amendment to the Planning Permit is required 	As the Applicant, EEA is accountable for ensuring compliance with the planning permit (consistent with the O&M Contract). This includes preparation of management plans, maintaining access to information and communication channels, providing notifications to the relevant authority, ensuring environmental monitoring is undertaken, and the review of internal environmental audits to ensure environmental performance
O&M Site Manager	<ul style="list-style-type: none"> Ensure compliance with the Integrated Management System Ensure the CEMP and other management plans are implemented Review and update the CEMP and other management plans as required Carry out site inspections and environmental monitoring Maintain complaints register and respond to complaints Manage incident response Investigate incidents and identify preventative actions Notify EEA of incidents and non-compliances Participate in Independent Environmental Audit and implement recommendations 	The O&M Site Manager is responsible for overseeing the HSE management of the development.
O&M Contractors	<ul style="list-style-type: none"> Operating in compliance with the CEMP and other management plans and the conditions of the Planning Permit Notify O&M Site Manager of any non-compliance or incidents 	All personnel are responsible for undertaking activities in accordance with the environmental management plans.

3. APPROACH TO LANDSCAPE ESTABLISHMENT

3.1. OVERVIEW

The Landscape Plan documentation includes the following documents.

- The Landscape Plans - drawing numbers CS-001 Cover Sheet, CS-002 Legend and Planting Schedule, PL-501 Planting Plan 01, PL-502 Planting Plan, PL-503 Planting Plan 03, DT-901 Details
- The Landscape Specification; and
- The Landscape Maintenance Plan (this document).

The approach to the construction of the proposed landscape works will be undertaken in accordance with the Landscape Plans and Landscape Specification.

The approach to planting and maintenance is based on the maximisation of success through:

- The timing of planting works to coincide with the best seasonal conditions for plant establishment.
- The selection of appropriate hardy indigenous plant species.
- The selection of plant stock sizes as forestry tubes that will allow for the highest survival and growth rates.
- Thorough soil preparation and deep mulching to ensure strong root establishment.
- Appropriate protection to ensure that the plants are not damaged by wind or animals (rabbits and livestock).
- Ongoing maintenance to ensure optimal growing conditions are maintained.

3.2. REMOVAL OF WEEDS

Where persistent weeds exist, particularly rhizomous species such as couch, buffalo and kikuyu, pre-planting spraying shall be undertaken to reduce the ongoing incidence of infestation of mulched areas and subsequent choking of, or competition with planted species. This shall entail:

- Spraying surface weed species throughout the entire area to be mulched and planted during the growing season of late spring to early autumn. Apply glyphosate in accordance with manufacturers recommended rate and application directions.
- Where such invasive species do not exist, weed / grass cover may be removed from the surface prior to planting by mechanical means.

3.3. SOIL CULTIVATION

- Where weeds / grass have been sprayed with herbicide, ensure that all surface plant material is dead prior to commencing soil cultivation.
- Remove any dead surface plant material resulting from herbicide spraying.
- Prepare individual holes for plants and break up well to aid root penetration (in accordance with Landscape Plan details).

3.4. PLANTING

The key tasks undertaken are:

- Commence planting with species at the specified densities or in the locations as indicated on the Landscape Plans. Plant material is to be tubestock unless otherwise specified.

- For all plants apply “Osmocote” native mix slow-release fertiliser to the base of the hole in accordance with the manufacturers recommended rate for the size of container.
- Install SureJute Planting Squares, 740gsm, 600mm square, or similar approved, to each plant.
- Install an individual hardwood marker stake to tubestock planting stock.
- Mulch area around each plant to 500mm radius, with propagule free, semi-composted native/indigenous plant material sourced mulch to 75mm depth.
- All plants are to be thoroughly watered in following planting.
 - Tubestock will not generally require watering after this initial watering unless unseasonably dry conditions are experienced.
 - Hand water, water truck or other irrigation as needed to supplement natural rainfall and maintain plantings in a healthy, stress-free condition.
 - It is the contractor's responsibility to make sure that plants receive adequate water regardless of weather conditions. Watering should be undertaken during periods of minimum evaporation (ie: during the coolest times of the day or when the garden bed is in the shade).
 - Shrubs and trees in full sun must not be watered on the foliage to avoid leaf scorching. It is the responsibility of the contractor to conserve water and assure that all watering rules and regulations are followed. Any penalties, fines, or citations for watering ordinance violations shall be paid by the contractor.

3.5. PROGRAMMING

- Planting should occur primarily in early to mid-spring or early to mid-autumn to ensure that soil moisture conditions and lower temperatures and evaporation rates provide the best possible opportunity for plants to establish. If planting occurs during summer, additional watering will be required during the plant establishment period.
- Consistent with Condition 8 of the Planning Permit (P0070/18), and Condition 5 of the Planning Permit (PA1900745), landscaping works must be implemented in accordance with the endorsed Landscaping Plan, and to the satisfaction of the responsible authority, prior to the commencement of operations on the project site.

4. MANAGEMENT

Ongoing maintenance will be undertaken for three (3) years post planting. It will entail the primary activities as defined in Section 4.1 and Section 4.2.

Section 4.3 prescribes detailed maintenance actions and their seasonal timing and frequency.

4.1. WEED MANAGEMENT

- Ongoing regular seasonal weed control with Glyphosate, or similar approved herbicide, will be required in spaces between plants with hand removal required around plants to reduce the potential for spray drift damage or over-spray. The main focus will be in mid-late autumn and spring when weed growth is most active.
- Apply Glyphosate, or similar approved herbicide, in accordance with the manufacturers recommended rate and application directions.
- Regularly remove, by hand, rubbish and weed growth that may occur or recur throughout planted areas. There shall be no greater than 5% weed coverage within planting areas and weeds shall not exceed 200mm in height. Hand removal of weeds must not damage screening plants to be retained.
- Remove from the planted area any weeds which have been removed by hand that have seed heads present.

4.2. PLANT MANAGEMENT

- Check mulch for coverage and evenness of depth and re-spread or reapply new mulch as required. Ensure that mulch is not piled around plants in direct contact with stems.
- Check that stakes are secure for the first two (2) years after planting. Remove stakes after this time.
- Check plants for any incidence of pest attack. Where severe infestations occur that result in significant physical damage to the plants, apply a natural insecticide such as "Dipel" or a pyrethrum-based contact agent.
- Any tree found to be dead or missing shall require a notification to the EEA Project Team advising that the tree be replaced with plant material of identical species. Replacement trees shall be planted only following instruction from EEA and shall be equal in size to the originally installed tree at the time it was planted at the site. Evidence of previous tree replacement purchases shall be evidenced by delivery dockets and purchase receipts. Replant in accordance with the previous directions. Removal and replacement must be undertaken causing minimal disturbance to existing plants. Mulch must be replaced to finished levels upon completion of works.
- All monitoring/inspections to assess the health of plants, the effectiveness of the establishing landscape screening, and potential remediation measures, are to be undertaken by a qualified horticulturalist. Inspections are to be undertaken at the start of Spring and Autumn, to coincide with the optimum seasonal planting time.

4.3. PROGRAMMING AND FREQUENCY

Weed and plant management is to be undertaken simultaneously. It is expected that frequency will reduce over time, with the first year being the most intensive. Anticipated timing and frequency of plant maintenance is outlined in **Table 3**.

TABLE 3 – MAINTENANCE PROGRAM

Year	Task	Frequency	Timing
Year 1	Weeding (mechanical and herbicide)	3 x per year	Spring (x2) Autumn (x1)

Year	Task	Frequency	Timing
	Re-spread / top up mulch	1 x per year	Spring
	Replace dead / dying plants	2 x per year	Autumn and Spring
	Check for insect damage / spray	2 x per year	Spring (x1) Autumn (x1)
	Refix plant guards	2 x per year	Autumn and Spring
	Check fencing	1 x per year	Autumn or Spring
	Watering	As required during the first year.	Most likely required during the first summer (x4)
	Inspection by qualified horticulturist	2 x per year	Early Spring (x1) and early Autumn (x1)
Year 2	Weeding (mechanical and herbicide)	3 x per year	Spring (x2) Autumn (x1)
	Re-spread / top up mulch	1 x per year	Spring
	Replace dead / dying plants	2x per year	Autumn and Spring
	Check for insect damage / spray	2 x per year	Spring (x1) Autumn (x1)
	Refix plant guards	2 x per year	Autumn and Spring
	Check fencing	1 x per year	Autumn or Spring
	Inspection by qualified horticulturist	2 x per year	Early Spring (x1) and early Autumn (x1)
Year 3	Weeding (mechanical and herbicide)	2 x per year	Spring (x1) Autumn (x1)
	Re-spread / top up mulch	1 x per year	Spring
	Replace dead / dying plants	2 x per year	Autumn and Spring
	Check for insect damage / spray	2 x per year	Spring (x1) Autumn (x1)
	Remove plant guards	1 x per year	Autumn or Spring
	Check fencing	1 x per year	Autumn or Spring
	Inspection by qualified horticulturist	2 x per year	Early Spring (x1) and early Autumn (x1)

DISCLAIMER

This report is dated 29th April 2025 and incorporates information and events up to that date only and excludes any information arising, or event occurring, after that date which may affect the validity of Urbis Pty Ltd (**Urbis**) opinion in this report. Urbis prepared this report on the instructions, and for the benefit only, of European Energy Australia (**Instructing Party**) for the purpose of Landscape Plan (**Purpose**) and not for any other purpose or use. To the extent permitted by applicable law, Urbis expressly disclaims all liability, whether direct or indirect, to the Instructing Party which relies or purports to rely on this report for any purpose other than the Purpose, and to any other person which relies or purports to rely on this report for any purpose whatsoever (including the Purpose).

In preparing this report, Urbis was required to make judgements which may be affected by unforeseen future events, the likelihood and effects of which are not capable of precise assessment.

All surveys, forecasts, projections and recommendations contained in or associated with this report are made in good faith and on the basis of information supplied to Urbis at the date of this report, and upon which Urbis relied. Achievement of the projections and budgets set out in this report will depend, among other things, on the actions of others over which Urbis has no control.

In preparing this report, Urbis may rely on or refer to documents in a language other than English, which Urbis may arrange to be translated. Urbis is not responsible for the accuracy or completeness of such translations and disclaims any liability for any statement or opinion made in this report being inaccurate or incomplete arising from such translations.

Whilst Urbis has made all reasonable inquiries it believes necessary in preparing this report, it is not responsible for determining the completeness or accuracy of information provided to it. Urbis (including its officers and personnel) is not liable for any errors or omissions, including in information provided by the Instructing Party or another person or upon which Urbis relies, provided that such errors or omissions are not made by Urbis recklessly or in bad faith.

This report has been prepared with due care and diligence by Urbis and the statements and opinions given by Urbis in this report are given in good faith and in the reasonable belief that they are correct and not misleading, subject to the limitations above.

From: [Susan Appleyard](#)
To: [Pablo Yague](#)
Cc: [Liona Edwards](#); [Ben Watson](#); [Federation Council Building & Planning](#)
Subject: Review of SSD 9039 Post Consent Documents
Date: Monday, 2 June 2025 1:00:04 PM

CAUTION: This email originated from outside Urbis group. Don't click on links or attachments unless you trust the sender.

Good afternoon pyague

Federation Council officers have reviewed the landscape plan and have no additional comments to make .

Council officers have also reviewed the Traffic Management Plan and request prior to works commencing that a copy of the dilapidation surveys for the impact roads be provided to Federation Council.

If you require further clarification please email or call.

--

Yours sincerely,

Susan Appleyard
Director Planning Place and Sustainability

P: (02) 6033 8985



Federation Council values the right to disconnect. Please respond during your working hours.

Federation Council acknowledges the Traditional Custodians of the land in which we work and live. We pay our respects to elders past, present, and emerging and recognise their continuing connection to the land, waters, and community. We will work together for a united Council that respects this land and values the contribution to our community of the Aboriginal and Torres Strait Islander peoples, their culture, and heritage.

[federationcouncil.nsw.gov.au](https://www.federationcouncil.nsw.gov.au)

100 Edward St (PO Box 77), Corowa NSW 2646

This message is intended for the addressee named and may contain confidential information. If you are not the intended recipient, please delete it and notify the sender.

Views expressed in this message are those of the individual sender, and are not necessarily the views of the Federation Council.

[Federation Council Banner](#)



24 June 2025

TfNSW reference: REN25/00106/001 | SF2025/075800

Your reference: SSD-9039

Steffi Fernando

European Energy

By Email: stfo@europeanenergy.com

Review of Landscape Plan for Mulwala Solar Farm Stage 2 – Federation LGA

Dear Steffi,

Reference is made to the Landscape Plan prepared for Stage 2 of the Mulwala Solar Farm proposal submitted to Transport for NSW (TfNSW) for consideration in accordance with Schedule 3, Conditions 7 and 8 of Notice of Determination for SSD-9039 issued 18 December 2018.

TfNSW has reviewed the Landscape Plan prepared by Urbis, dated 29 April 2025, and has no further comments on the landscape plan.

TfNSW advises that the consultation requirements and submitted landscape plan meet TfNSW requirements concerning the state road network. TfNSW advises that consultation with TfNSW pursuant to Schedule 3, Conditions 7 and 8 of Notice of Determination SSD-9039 has been satisfactorily addressed and no further consultation is required with TfNSW.

If you have any questions, please contact Glen Hanchard, Development Services Case Officer on 1300 019 680 or email development.renewables@transport.nsw.gov.au

Yours sincerely,



Alexandra Power

Team Leader Development Services – Renewables

Transport Planning

Planning, Integration and Passenger

Cc. Energy Assessments, Department of Planning, Housing and Infrastructure